



OFFICE SPACE FOR LEASE

535 THURLOW
STREET

TURN-KEY SOLUTIONS

ANDREW ASTLES

Associate Vice President
+1 604 998 6045
andrew.astles@jll.com

SCOTT MACDONALD*

Executive Vice President
+1 604 998 6020
scott.macdonald@jll.com

THE PRINTING HOUSE

LOADING ZONE

PARKING

Overview

535 Thurlow Street is situated on the west side of Thurlow Street between Melville and West Hastings Streets, in the heart of Vancouver's Central Business District.

Several amenities compliment the area including restaurants, hotels, several financial institutions and the Bentall Centre and Burrard Station within one block.

ASKING RENT

Contact Agents for Details

ADDITIONAL RENT

\$16.05 (2024) + management fee

UNDERGROUND PARKING

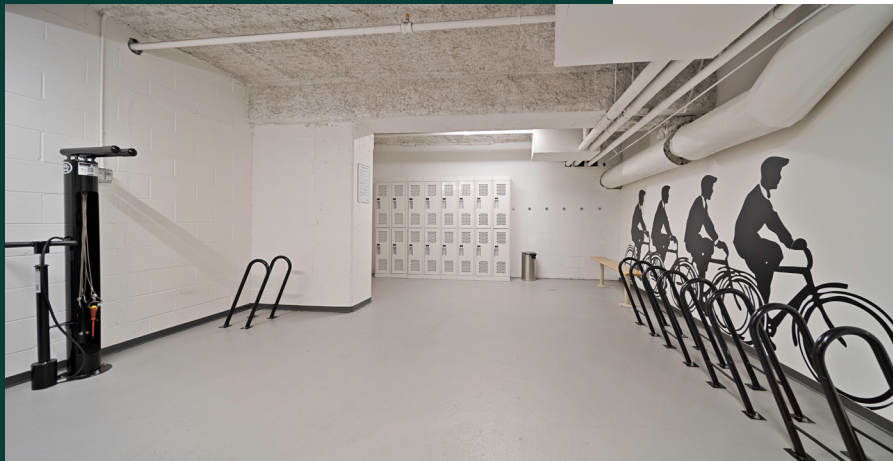
Available



Availabilities

UNIT/SUITE #	LEASE TYPE	SQ FT	POSSESSION DATE
802	Direct	2,285	Immediately

[DETAILS](#)

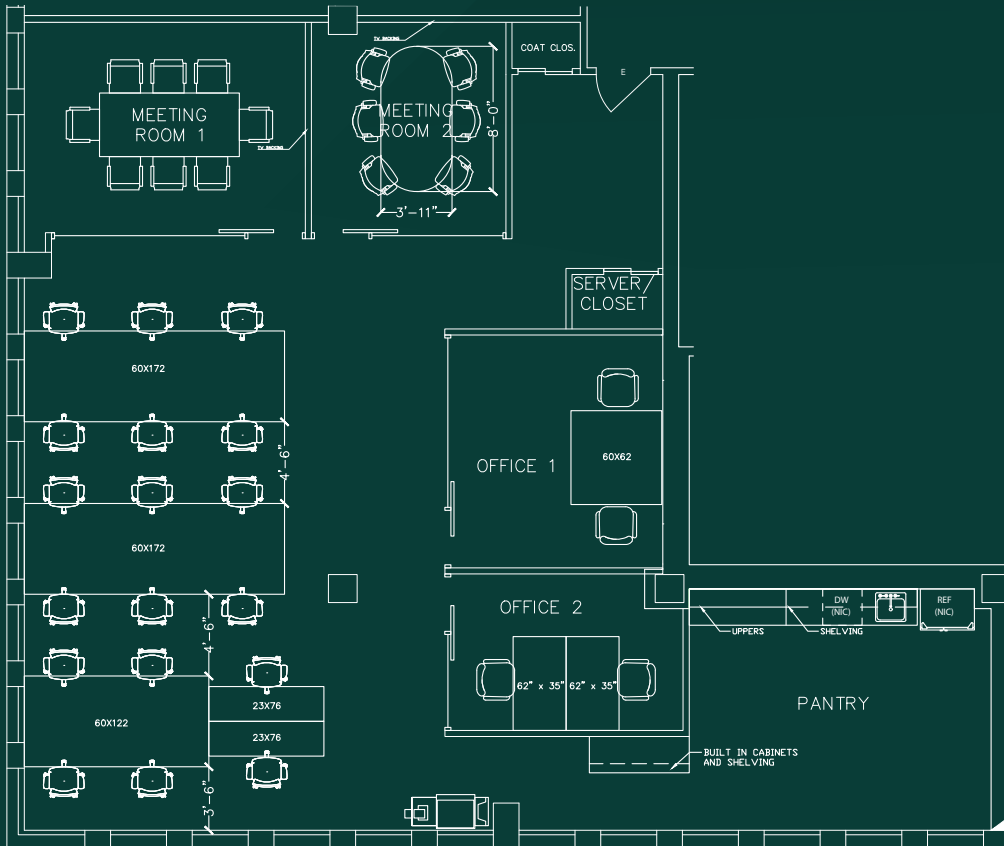


SUITE

802

Available immediately.

2,285 SF



*FURNITURE AND APPLIANCES NOT INCLUDED

SCALE: $\frac{3}{16}'' = 1'-0''$



VIRTUAL TOUR



Leasing Inquiries

ANDREW ASTLES

Associate Vice President
+1 604 998 6045
andrew.astles@jll.com

SCOTT MACDONALD*

Executive Vice President
+1 604 998 6020
scott.macdonald@jll.com

Although information has been obtained from sources deemed reliable, neither Owner nor JLL makes any guarantees, warranties or representations, express or implied, as to the completeness or accuracy as to the information contained herein. Any projections, opinions, assumptions or estimates used are for example only. There may be differences between projected and actual results, and those differences may be material. The Property may be withdrawn without notice. Neither Owner nor JLL accepts any liability for any loss or damage suffered by any party resulting from reliance on this information. If the recipient of this information has signed a confidentiality agreement regarding this matter, this information is subject to the terms of that agreement.

©2024 Jones Lang LaSalle Real Estate Services, Inc. All rights reserved. | www.jll.ca | *Personal Real Estate Corporation

