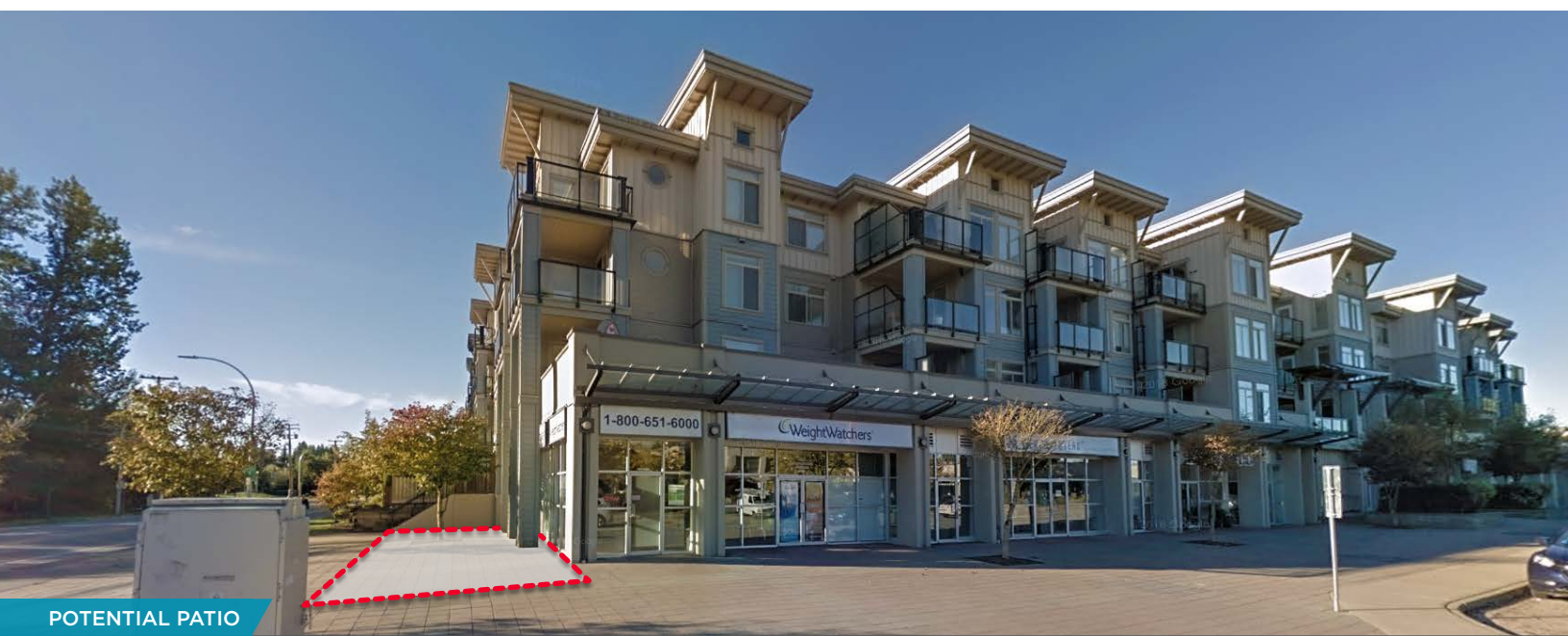




FOR LEASE
CHARLTON PARK
15380 102A AVENUE • SURREY, BC

1,531 SF Available
High Exposure Office / Retail Opportunities



POTENTIAL PATIO

Cody Buchamer

Associate
604 608 5999
cody.buchamer@cushwake.com

LOCATION

- Set in the heart of Guildford at the corner of 154th Street & 102A Avenue
- The retail center of one of the fastest growing cities in Canada
- High traffic exposure along 154th Avenue
- One block east of 152nd Avenue

FEATURES

- Charlton Park is a mixed use development consisting of 339 exclusive low rise homes
- Approximately 9,000 sf of retail/office space on 102A Avenue
- Great exposure along 102A Avenue
- Floor to ceiling full storefront glazing
- Ample underground parking
- Perfect for professional office and service retail uses
- 200 AMP power per unit
- Over height ceilings

AVAILABLE AREA

CRU 107 1,531 sf

ASKING LEASE RATE

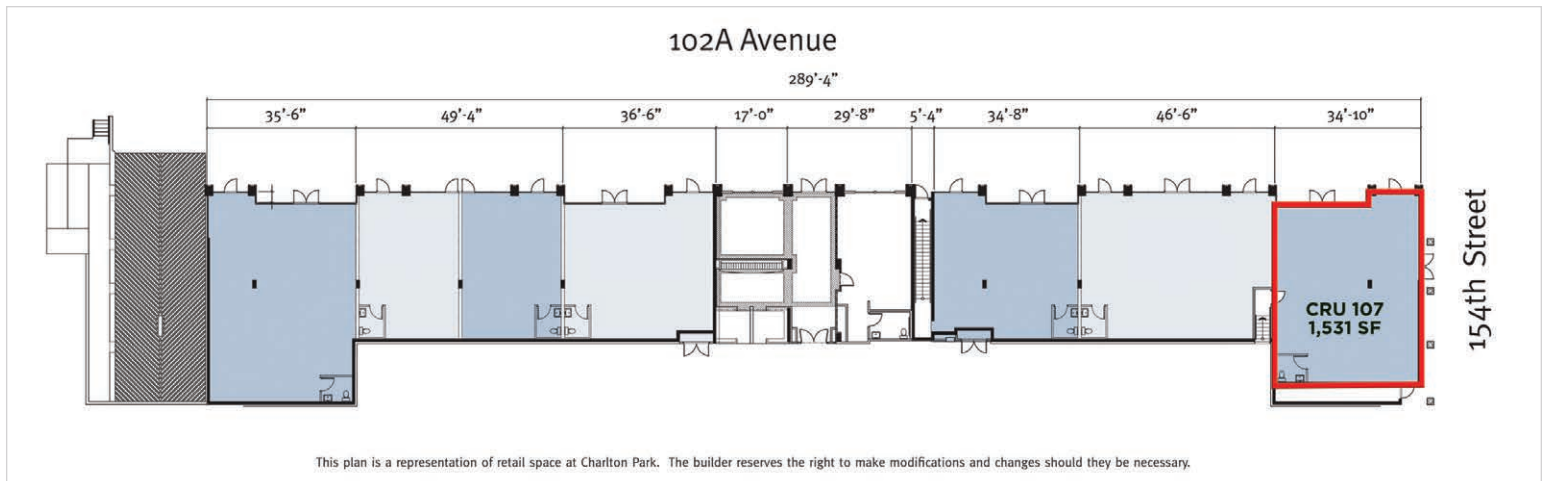
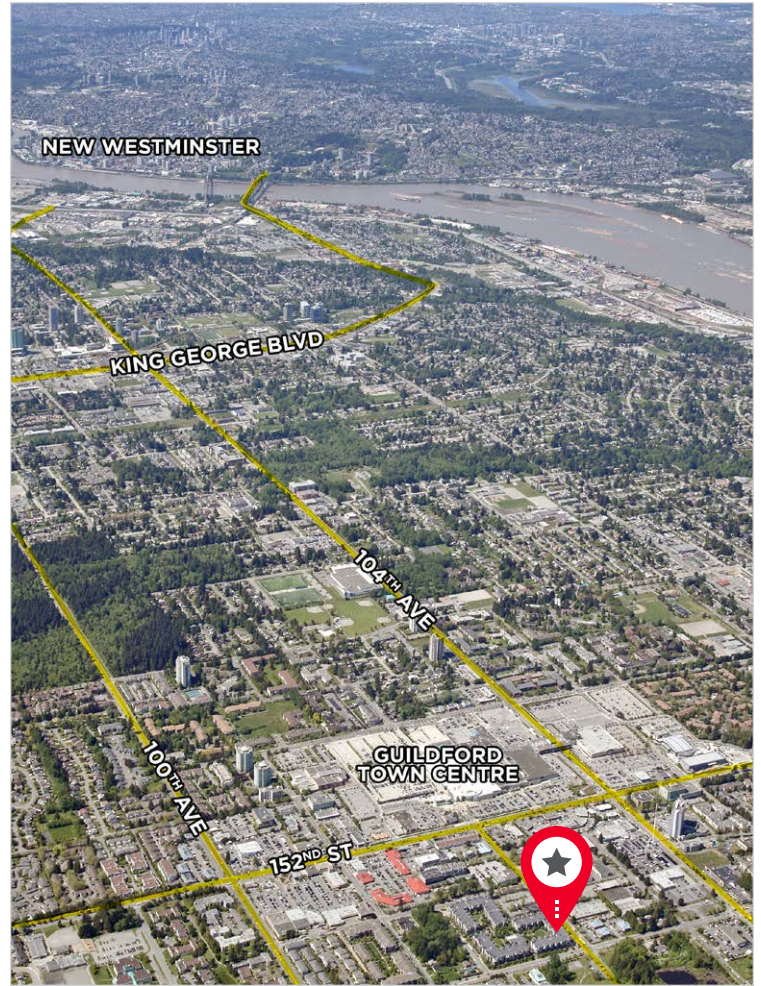
\$22.00 psf

ADDITIONAL RENT

\$9.60 psf (2019)

MONTHLY GROSS RENT

\$3,995.91 plus applicable taxes, utilities & hydro



Cody Buchamer

Associate
604 608 5999
cody.buchamer@cushwake.com