

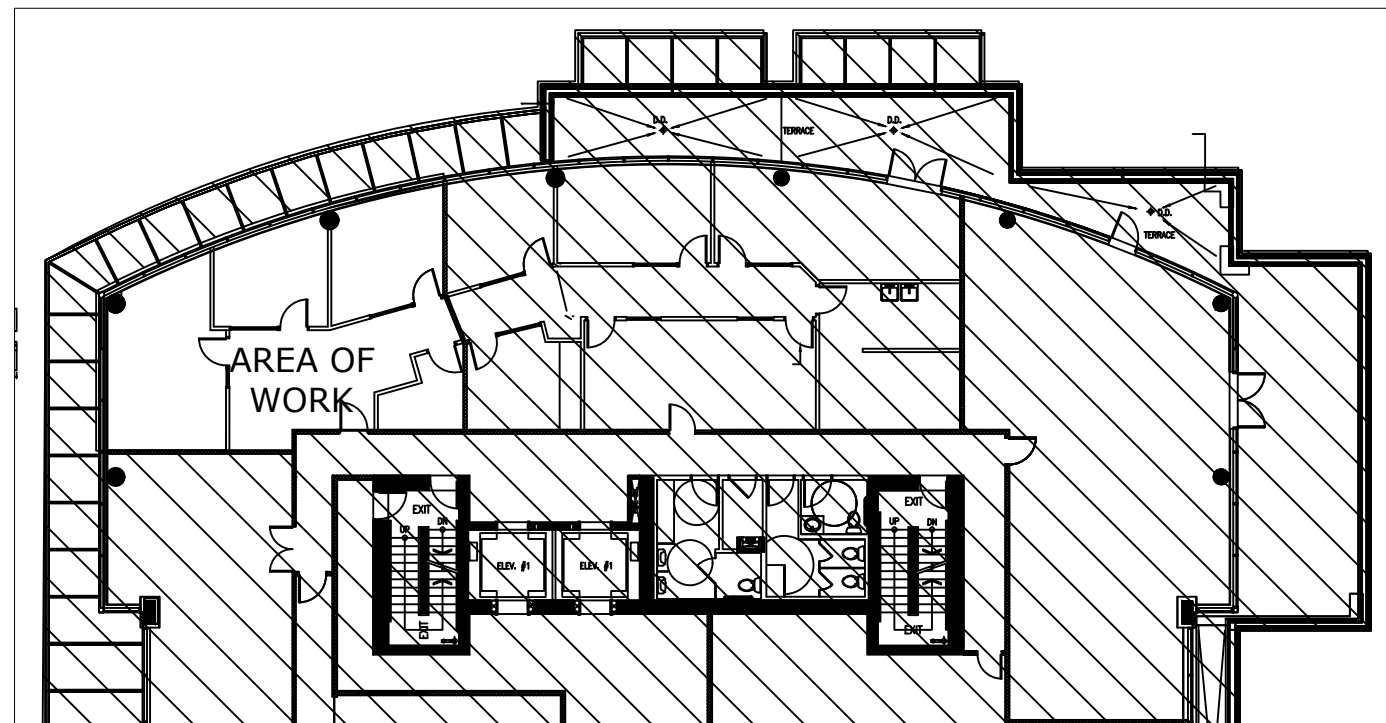
130 BREW STREET  
 SUITE 203A  
 130 BREW ST.  
 PORT MOODY, B.C.

TABLE OF CONTENTS:

CORRIDOR CONSTRUCTION SET

- ID1.01 FLOOR PLAN
- ID1.02 DIM. FLOOR PLAN
- ID1.03 POWER & DATA PLAN  
 POWER PANTRY DETAIL
- ID1.04 REFLECTED CEILING PLAN
- ID1.05 FINISH PLAN

KEY PLAN:



ISSUE: 5/8/2018

DESIGNER: DC

REVISIONS:

NO.	DESCRIPTION	DATE

LEASING CONTACT INFORMATION:

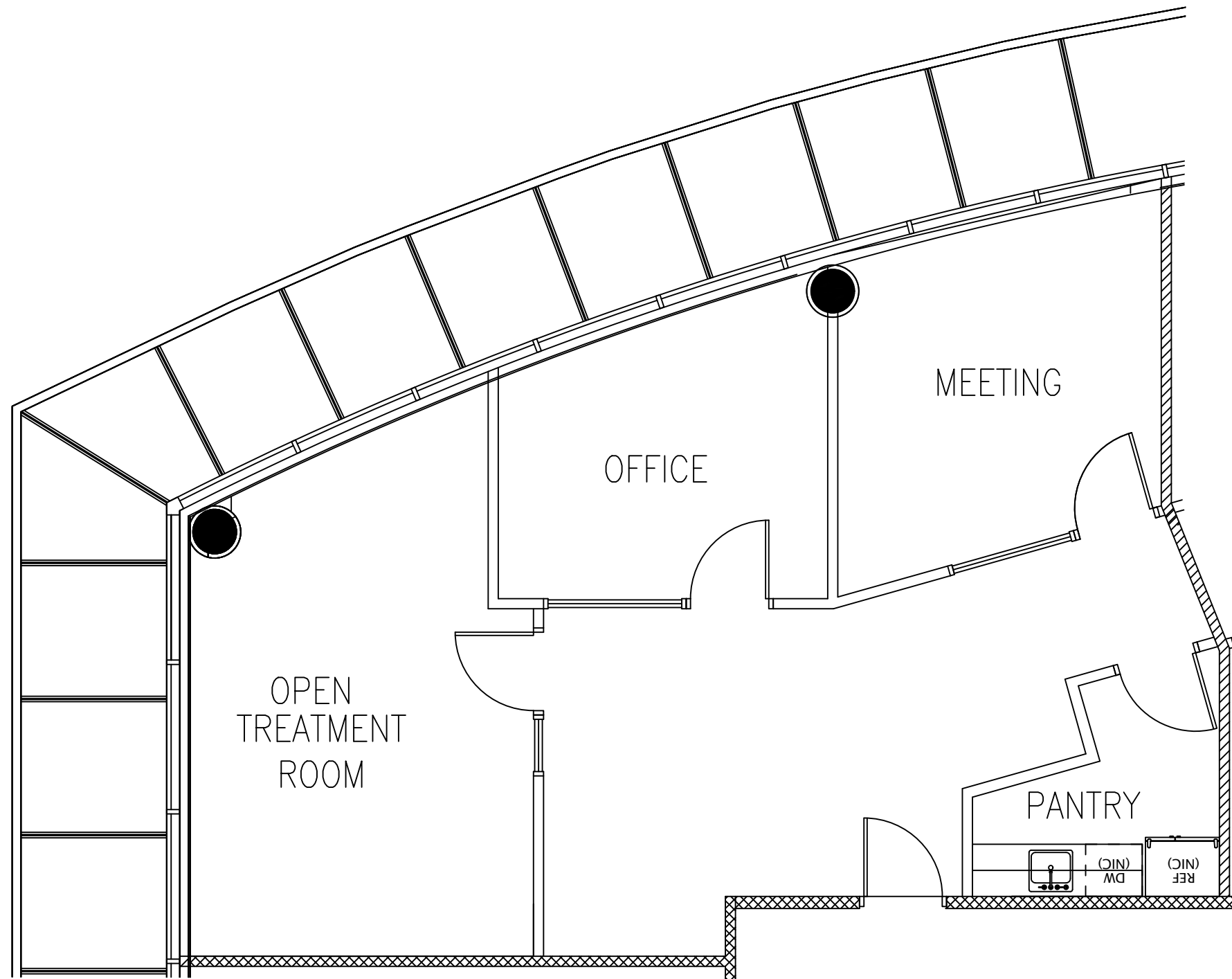
SHEET TITLE:

CONSTRUCTION SET

SHEET:

COVER SHEET

130 BREW STREET  
 SUITE 203A  
 130 BREW ST.  
 PORT MOODY, B.C.



ISSUE: 5/8/2018

DESIGNER: DC

REVISIONS:

NO.	DESCRIPTION	DATE

LEGEND:

- DRYWALL
- GLAZING
- HOLLOW CORE WOOD DOOR
- BUILDING STANDARD SWING DOOR

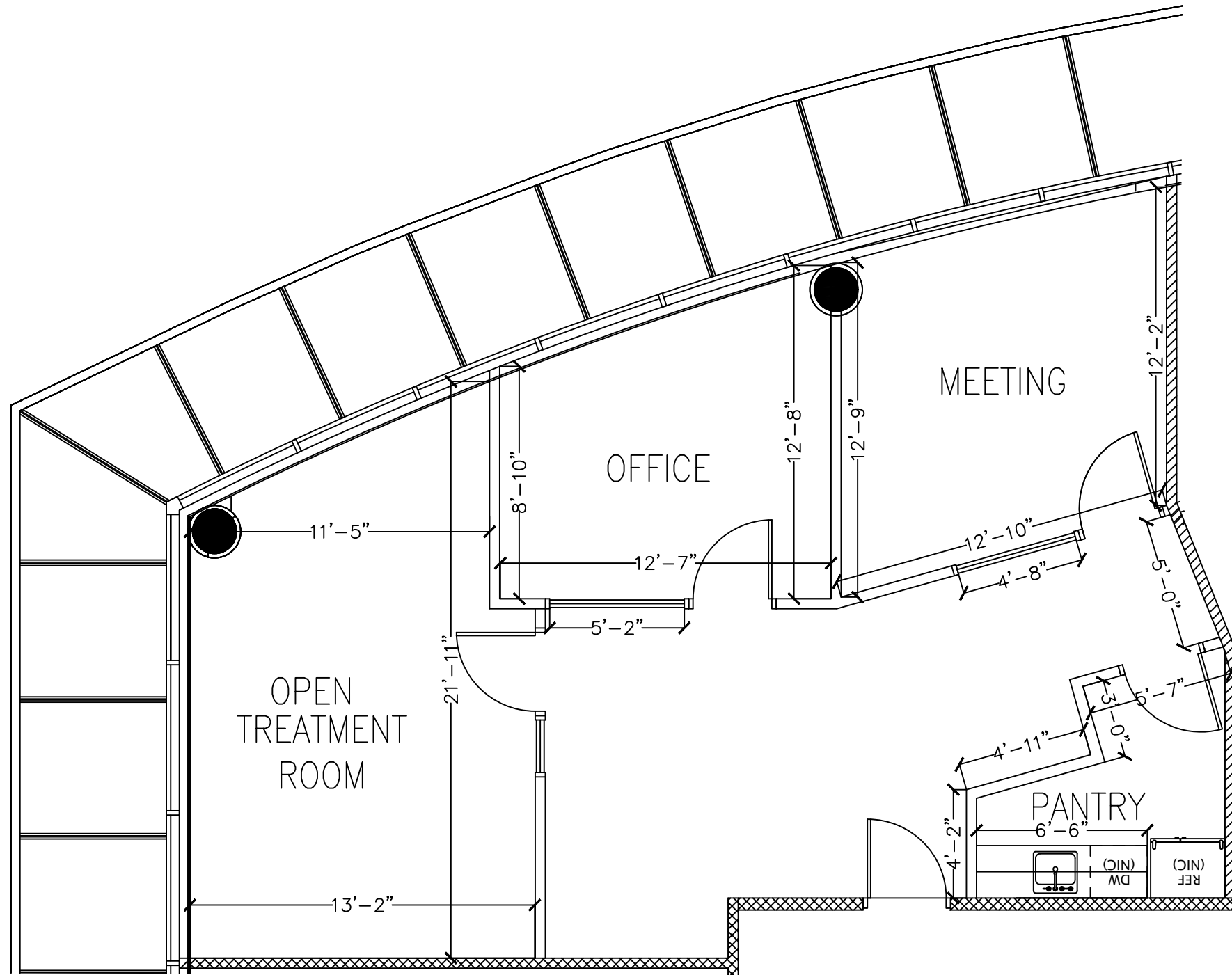
SHEET TITLE:

FLOOR PLAN

SHEET:

ID1.01

130 BREW STREET  
 SUITE 203A  
 130 BREW ST.  
 PORT MOODY, B.C.



ISSUE: 5/8/2018

DESIGNER: DC

REVISIONS:

LEGEND:

- DRYWALL
- GLAZING
- HOLLOW CORE WOOD DOOR
- BUILDING STANDARD SWING DOOR

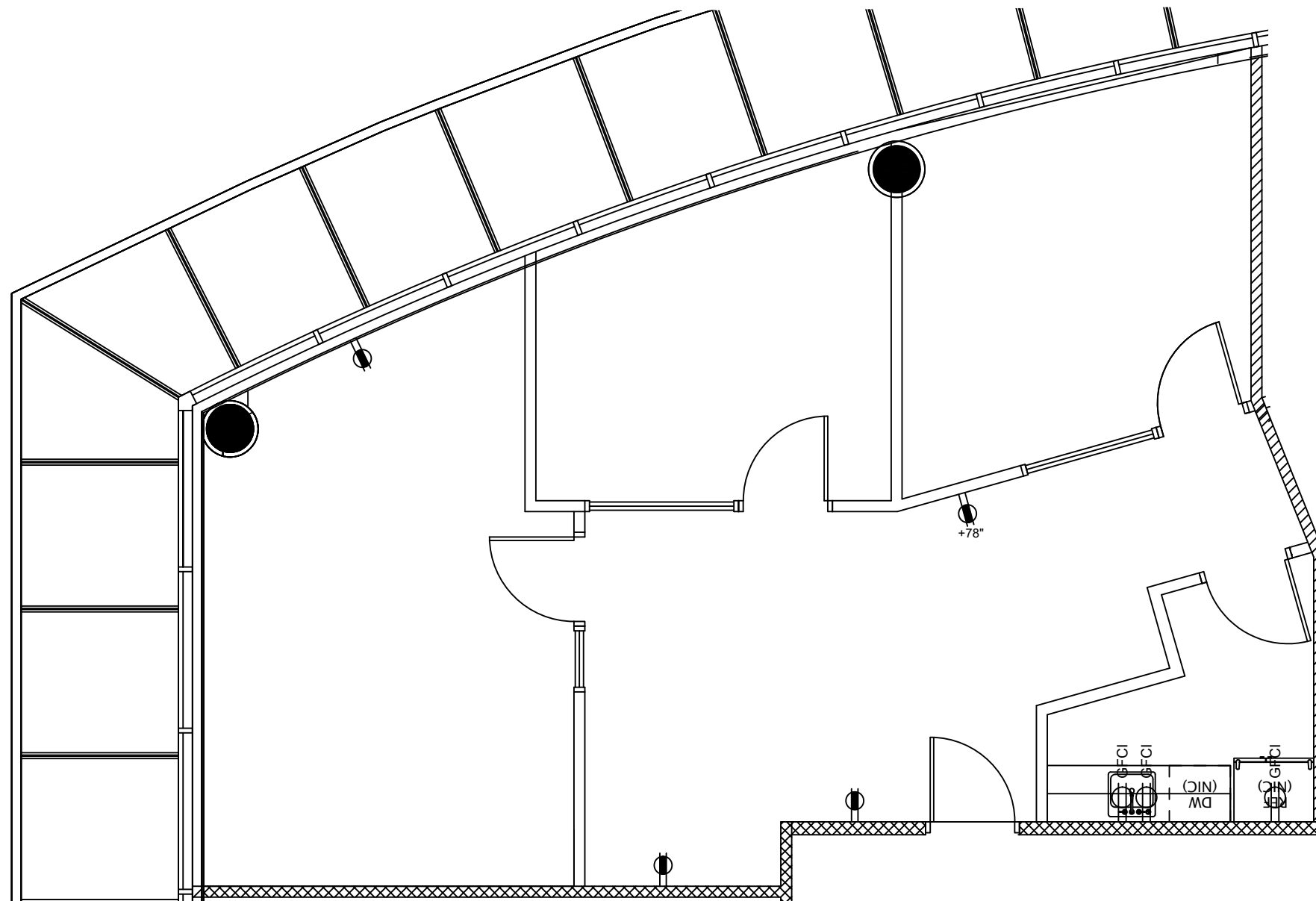
SHEET TITLE:

DIMENSIONED  
 FLOOR PLAN

SHEET:

ID1.02

130 BREW STREET  
 SUITE 203A  
 130 BREW ST.  
 PORT MOODY, B.C.



ISSUE: 5/8/2018

DESIGNER: DC

REVISIONS: 5/14/2018

5/16/2018

5/23/2018

LEGEND:

- ELECTRICAL W/O USB OUTLET
- DATA OUTLET
- GFCI ELECTRICAL OUTLET
- +36" 36" AFF

SHEET TITLE:

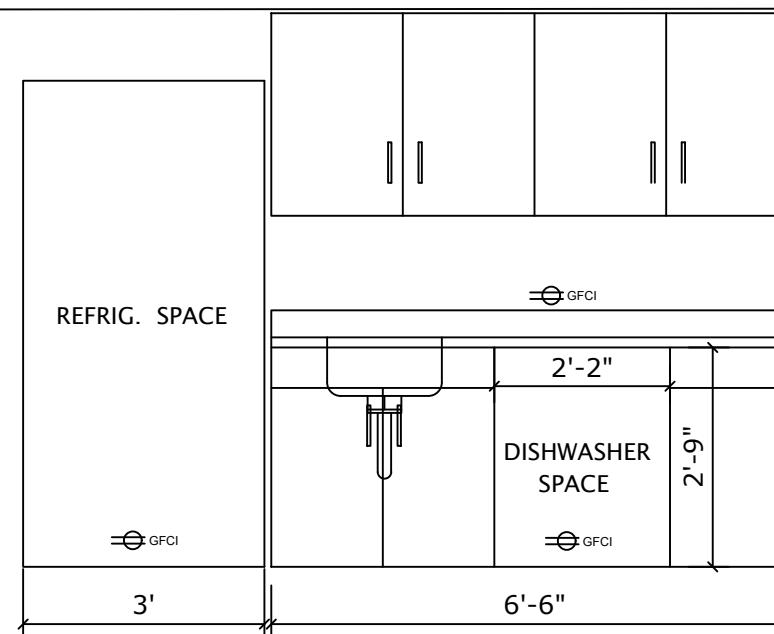
POWER & DATA

SHEET:

ID1.03

Note: This elevation reflects general pantry layout and power. Millworker will provide cabinetry shop drawings and should alter cabinet sizes, etc. as necessary.

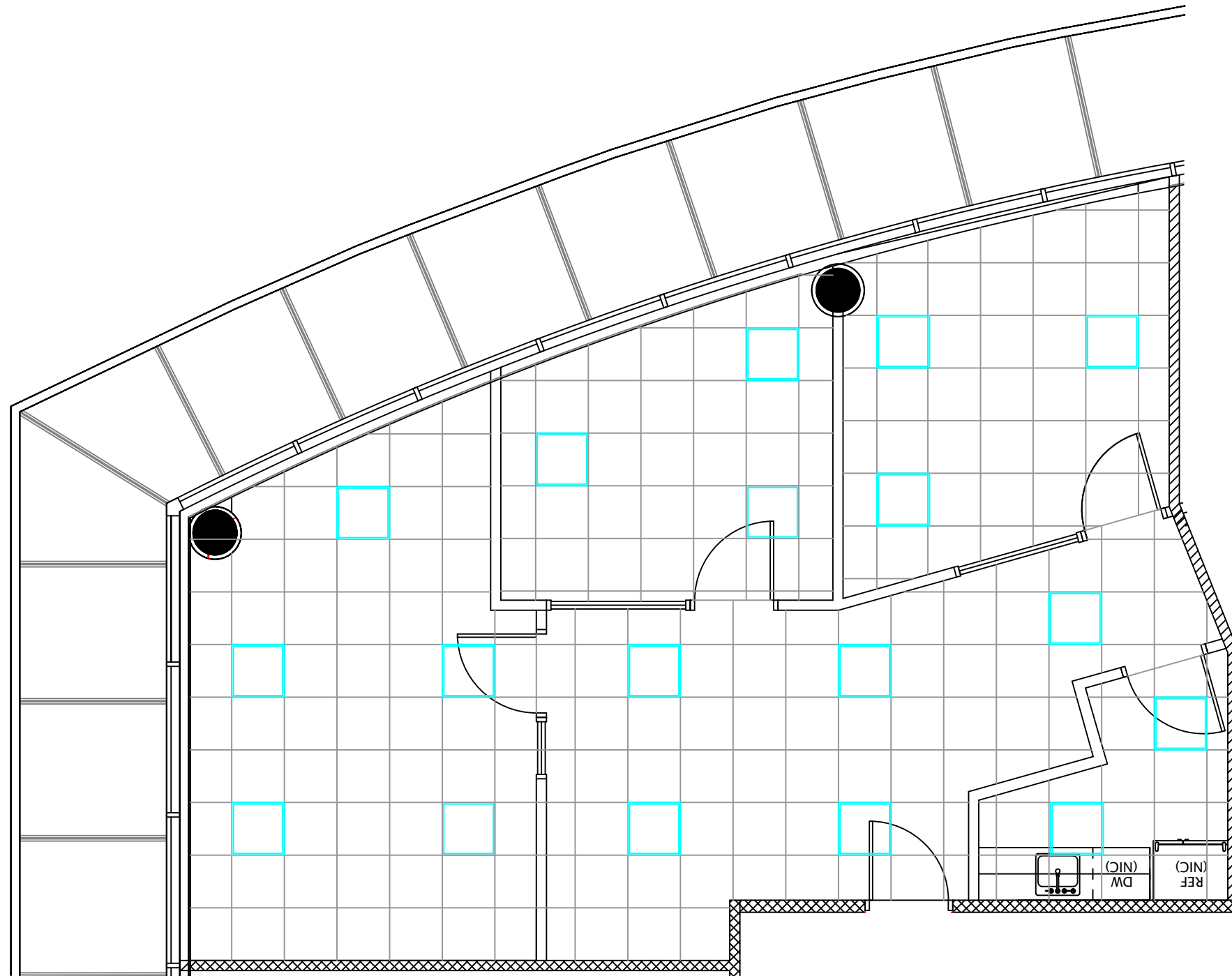
- Soft closers for all hardware
- Undermount sink
- One 1 <sup>3</sup>/<sub>8</sub>" hole for faucet
- One 1 <sup>3</sup>/<sub>8</sub>" hole for aerator



POWER PANTRY DETAIL

\*OUTLETS AND DATA OUTLETS ARE "AS IS, WHERE IS" ON SITE UNLESS NOTED OTHERWISE

130 BREW STREET  
 SUITE 203A  
 130 BREW ST.  
 PORT MOODY, B.C.



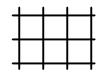
ISSUE: 5/8/2018

DESIGNER: DC

REVISIONS:

NO.	DESCRIPTION	DATE

LEGEND:



T-BAR CEILING GRID



2'X2' LED LIGHT

SHEET TITLE:

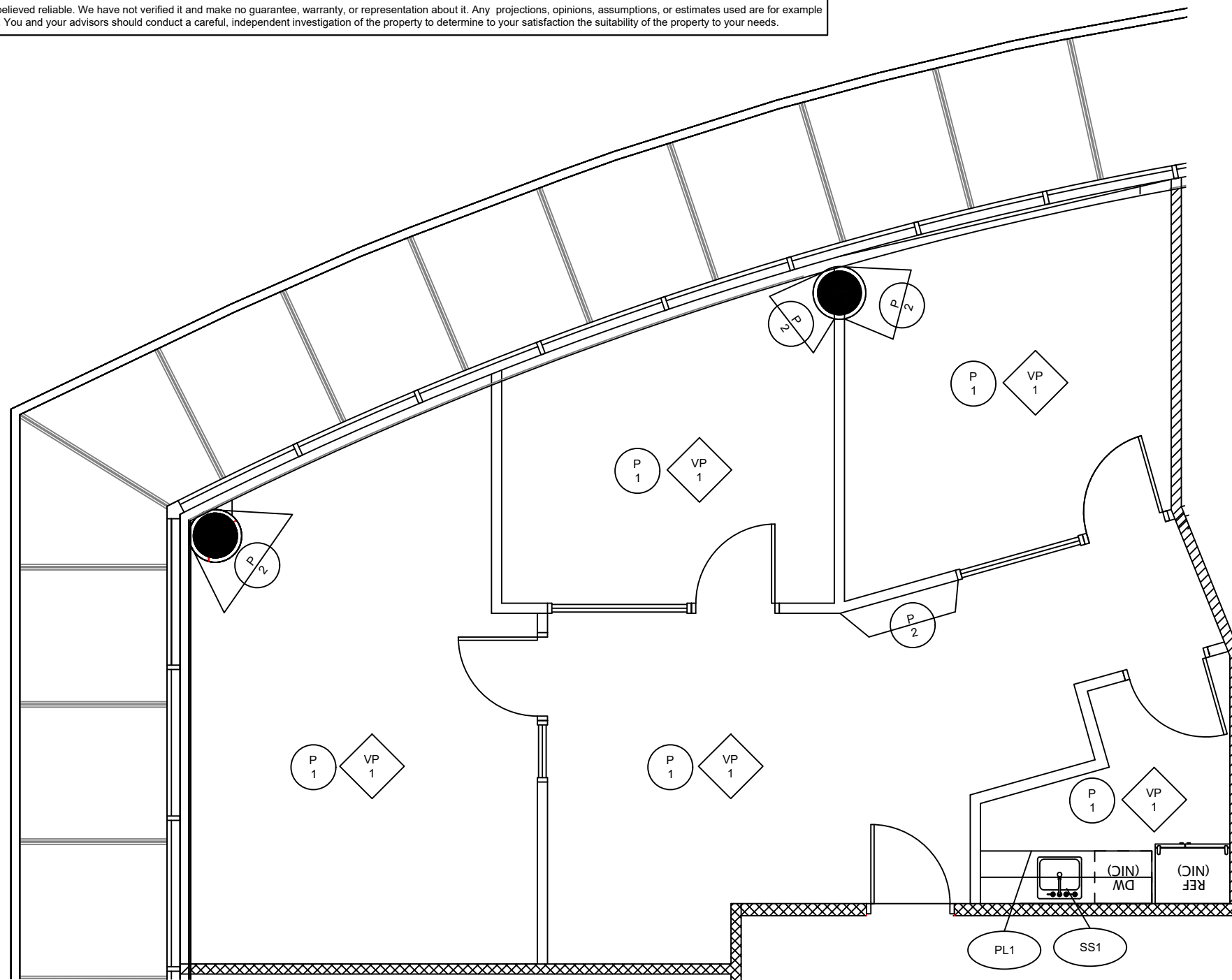
REFLECTED  
 CEILING PLAN

SHEET:

ID1.04

\*LIGHTING AND T-BAR CEILING "ARE AS IS, WHERE IS" ON SITE

130 BREW STREET  
 SUITE 203A  
 130 BREW ST.  
 PORT MOODY, B.C.



ISSUE: 5/8/2018

DESIGNER: DC

REVISIONS: 5/16/2018

5/17/2018

6/4/2018

LEGEND:

- XX  
XX — WALL FINISH  
 — FINISH TYPE  
 — FINISH NUMBER
- FLOOR FINISH  
 — FINISH TYPE  
 — FINISH NUMBER
- MILLWORK FINISH  
 — PLASTIC LAMINATE  
 — SOLID SURFACE

### WALL FINISH SCHEDULE

NO.	MANUFACTURER	TYPE	COLOR	FINISH	REMARKS
P1	BEHR	PAINT, PREMIUM PLUS	BEHR QUIET WHISPER BWC-05	EGGSHELL	PAINT THROUGHOUT- EXCEPT AT ACCENT WALLS
P2	BEHR	PAINT, PREMIUM PLUS	GO GO LIME P350-5M	EGGSHELL	ACCENT PAINT, SEE DRAWING FOR LOCATION

### MILLWORK FINISH SCHEDULE

NO.	TYPE	MANUFACTURER	COLOR	FINISH	SIZE	REMARKS
PL1	PLASTIC LAMINATE	WILSONART	UPTOWN WALNUT 7971K-12	SOFTGRAIN FINISH WITH AEON	N/A	PANTRY CABINET LAMINATE
SS1	SOLID SURFACE	QORTSTONE	SUGAR WHITE QA1003	POLISHED	3/4" (APPX)	COUNTERTOP, PANTRY AREA

### FLOORING SCHEDULE

NO.	MANUFACTURER	TYPE	STYLE/ PATTERN	COLOR	BASE	REMARKS
VP1	CENTURA	VINYL PLANK	N/A	DCM-TORONTO	N/A	PLANK DIRECTION TO BE PERPENDICULAR TO SUITE ENTRY DOOR SEE SPEC FOR INSTALLATION DETAILS

SHEET TITLE:

FINISH PLAN

SHEET:

ID1.05