

PLAN E

4 BEDROOM | 3.5 BATH

TOTAL AREA 2,015 SQ. FT.

1,920 SQ. FT.
INDOOR AREA

95 SQ. FT.
OUTDOOR AREA

- 1

36" Integrated Fulgor Milano Fridge
- 2

30" Fulgor Milano Gas Cooktop
- 3

30" Fulgor Milano Wall Oven
- 4

30" Faber Hoodfan
- 5

24" Integrated Breda Dishwasher
- 6

Under Counter Microwave
- 7

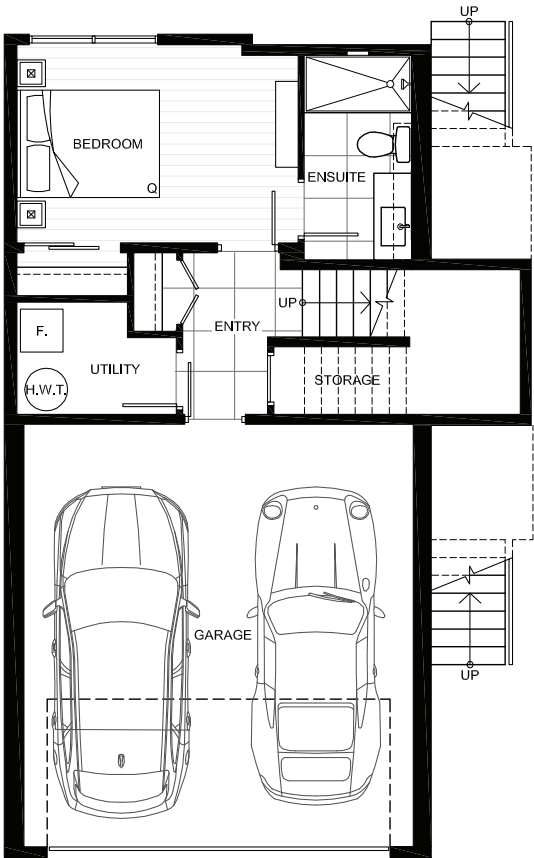
Sink Disposal
- 8

Pantry
- 9

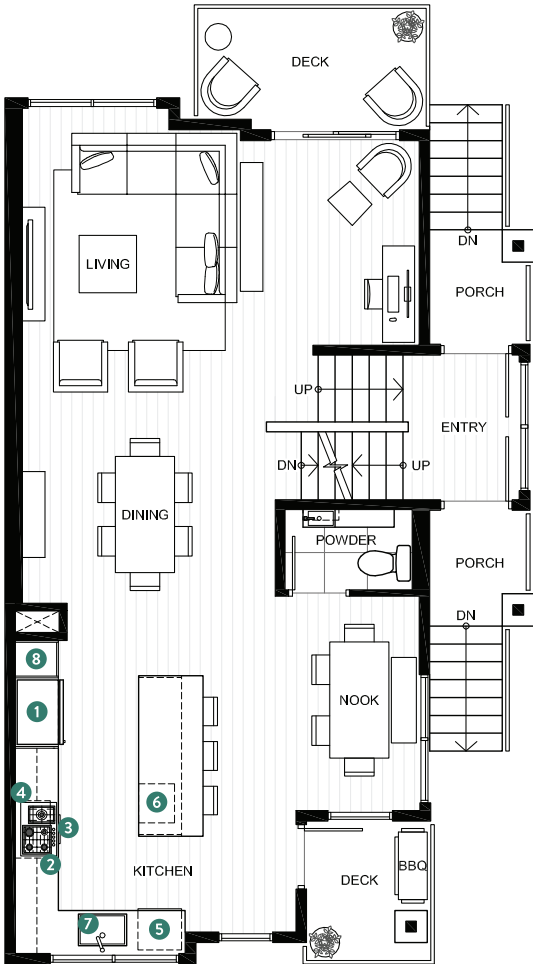
Full Size Washer and Dryer



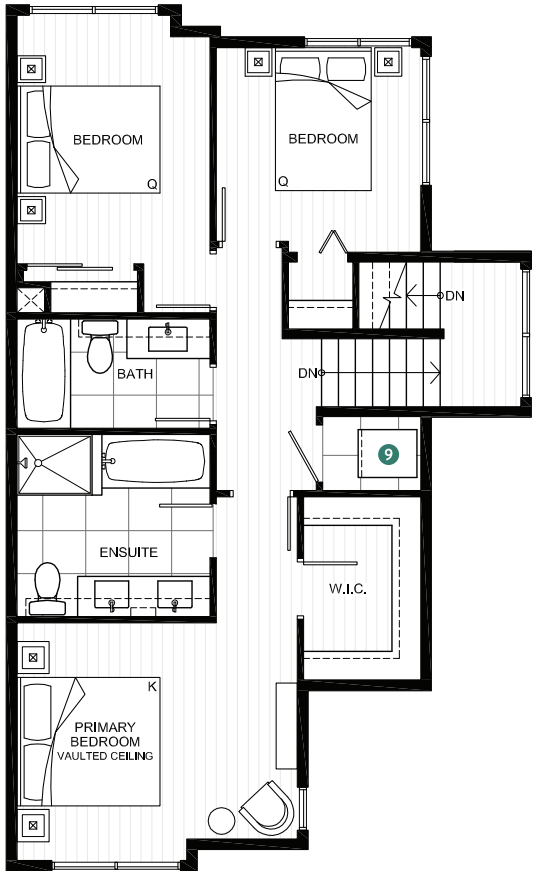
NATURE'S
WALK



LOWER FLOOR



MAIN FLOOR



UPPER FLOOR

The floorplans, square footage, dimensions, design and configuration of the strata lots and project are approximate and/or artist's interpretation only and may differ from what is shown. Final dimensions, square footage, and configuration shall be determined by the final strata plans. Final floorplans may be the mirror image of the floorplans shown above. Refer to architectural drawings. The developer reserves the right to make changes without notice to the floorplans, ceiling heights, project design, landscaping plans, appliances, specifications, and features. E.&O.E.