

NEW HOLLYWOOD MIXED-USE DEVELOPMENT

Restaurant/Fitness/Retail Spaces for Lease

KENNEDY WILSON

BROKERAGE

6901-6933 Santa Monica Blvd., Los Angeles, CA 90038



LEE SHAPIRO • 310-887-6226 • LShapiro@kennedywilson.com • DRE #00961769
JAYSEN CHIARAMONTE • 213-538-3492 • JChiaramonte@kennedywilson.com • DRE #02145586

onni
group

NEW HOLLYWOOD MIXED-USE DEVELOPMENT

Restaurant/Fitness/Retail Spaces for Lease



KENNEDY WILSON
BROKERAGE

6901-6933 Santa Monica Blvd., Los Angeles, CA 90038

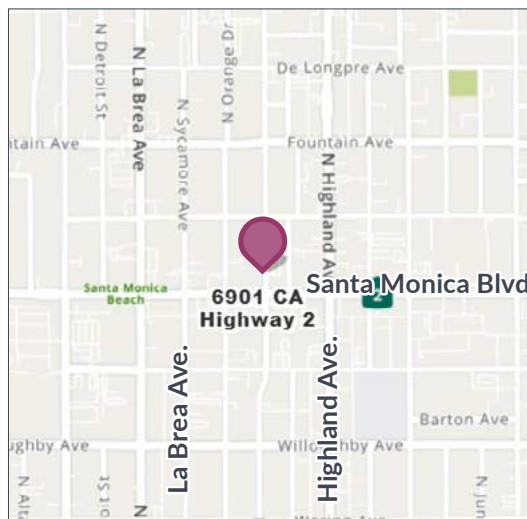
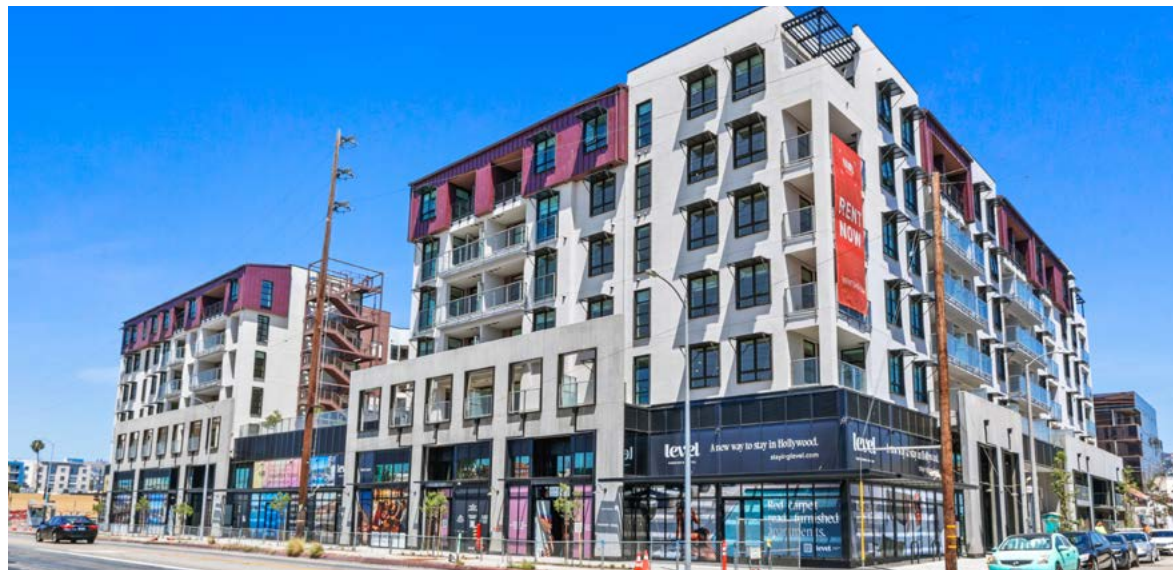
AVAILABLE

- Size:** Spaces ranging from ±1,424 SF - ±10,026 SF
- Rent:** \$4.35 - \$4.95 PSF/Mo., NNN
- NNN:** ±\$1.00 PSF/Month
- Parking:** 55 commercial parking spaces

PROPERTY HIGHLIGHTS

- Below 224 residential units
- Over 20 foot high ceilings
- Retail area designed to allow for multiple demising plans and uses
- Walking distance to restaurants and shops on Sycamore Avenue shopping district
- Tesla to open a [24-hour restaurant and charging station](#) that includes a rooftop seating area plus a pair of drive-in movie screens across the street
- ±38,108 cars per day at Santa Monica Blvd. and Orange Drive
- Population of ±58,049 within 1 mile

** Prospective tenants are hereby advised that all uses are subject to City approval*



TRADE AREA



Lee Shapiro

EVP, Director of Retail
310-887-6226
LShapiro@kennedywilson.com
DRE #00961769

Jaysen Chiamonte

Associate
310-887-3492
JChiamonte@kennedywilson.com
DRE #02145586

Kennedy Wilson Brokerage | 151 S. El Camino Drive, Beverly Hills, CA 90212

Kennedy-Wilson Properties, Ltd. (Responsible Broker Identity, DRE #00659610) makes no warranty or representation as to the accuracy of the information contained herein. Terms of sale or lease and availability of the property are subject to change or withdrawal without notice.

NEW HOLLYWOOD MIXED-USE DEVELOPMENT

Restaurant/Fitness/Retail Spaces for Lease

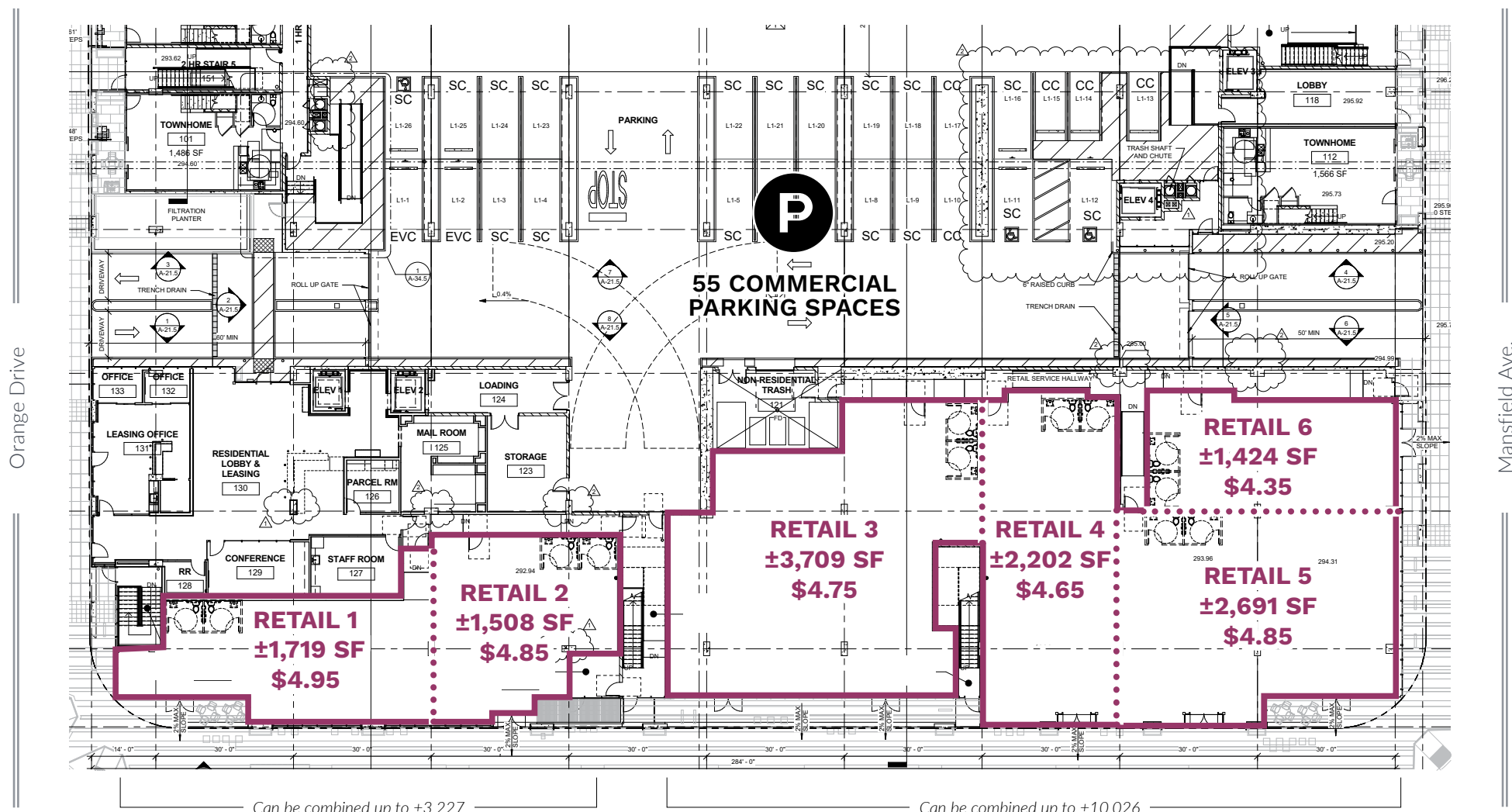


KENNEDY WILSON

BROKERAGE

6901-6933 Santa Monica Blvd., Los Angeles, CA 90038

All rents are PSF/Mo.,NNN



Orange Drive

Mansfield Ave.

Santa Monica Blvd.



NEW HOLLYWOOD MIXED-USE DEVELOPMENT

Restaurant/Fitness/Retail Spaces for Lease

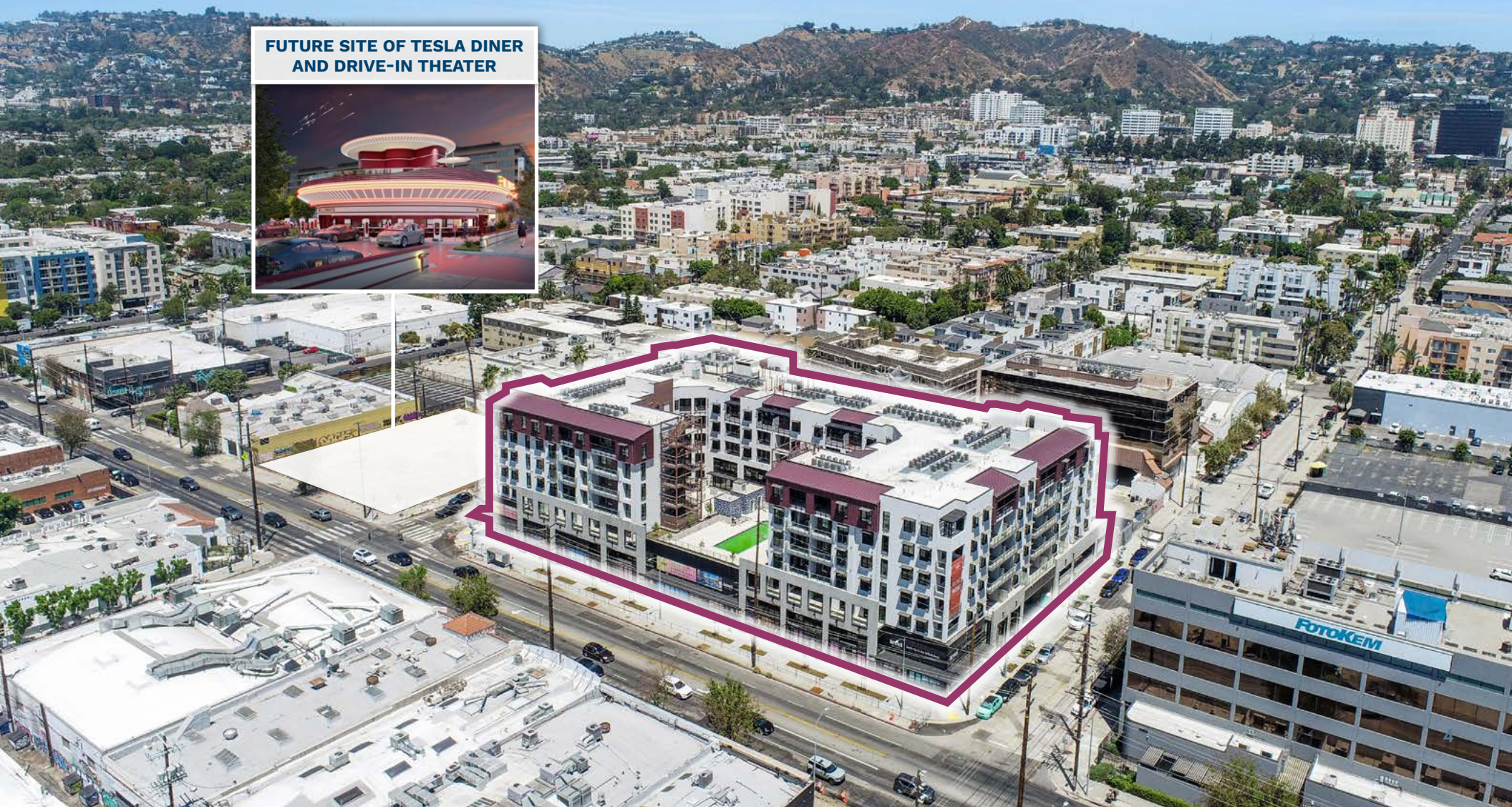


KENNEDY WILSON

BROKERAGE

6901-6933 Santa Monica Blvd., Los Angeles, CA 90038

**FUTURE SITE OF TESLA DINER
AND DRIVE-IN THEATER**



NEW HOLLYWOOD MIXED-USE DEVELOPMENT

Restaurant/Fitness/Retail Spaces for Lease



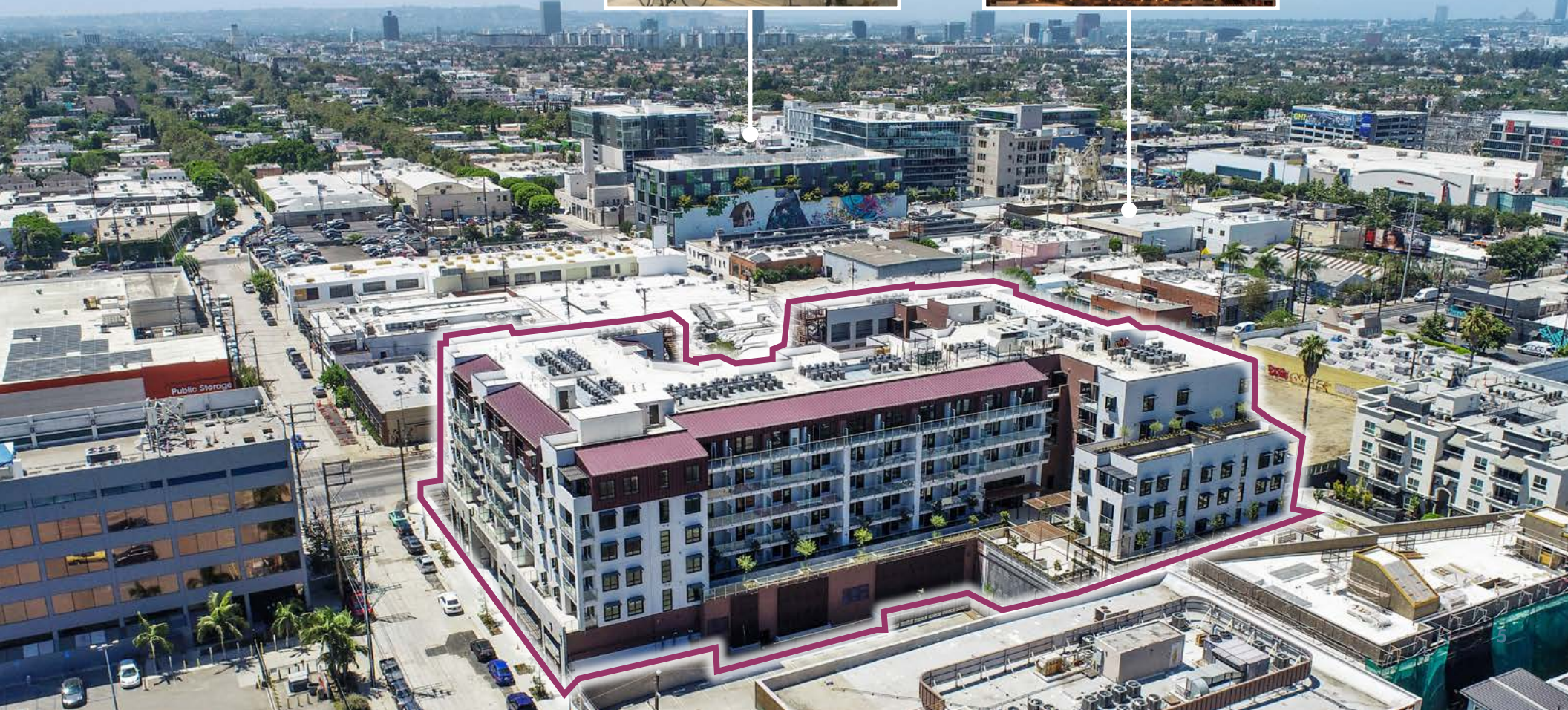
KENNEDY WILSON
BROKERAGE

6901-6933 Santa Monica Blvd., Los Angeles, CA 90038

**SYCAMORE
SHOPPING DISTRICT**



**CIM GROUP
PROPOSED DEVELOPMENT**



NEW HOLLYWOOD MIXED-USE DEVELOPMENT

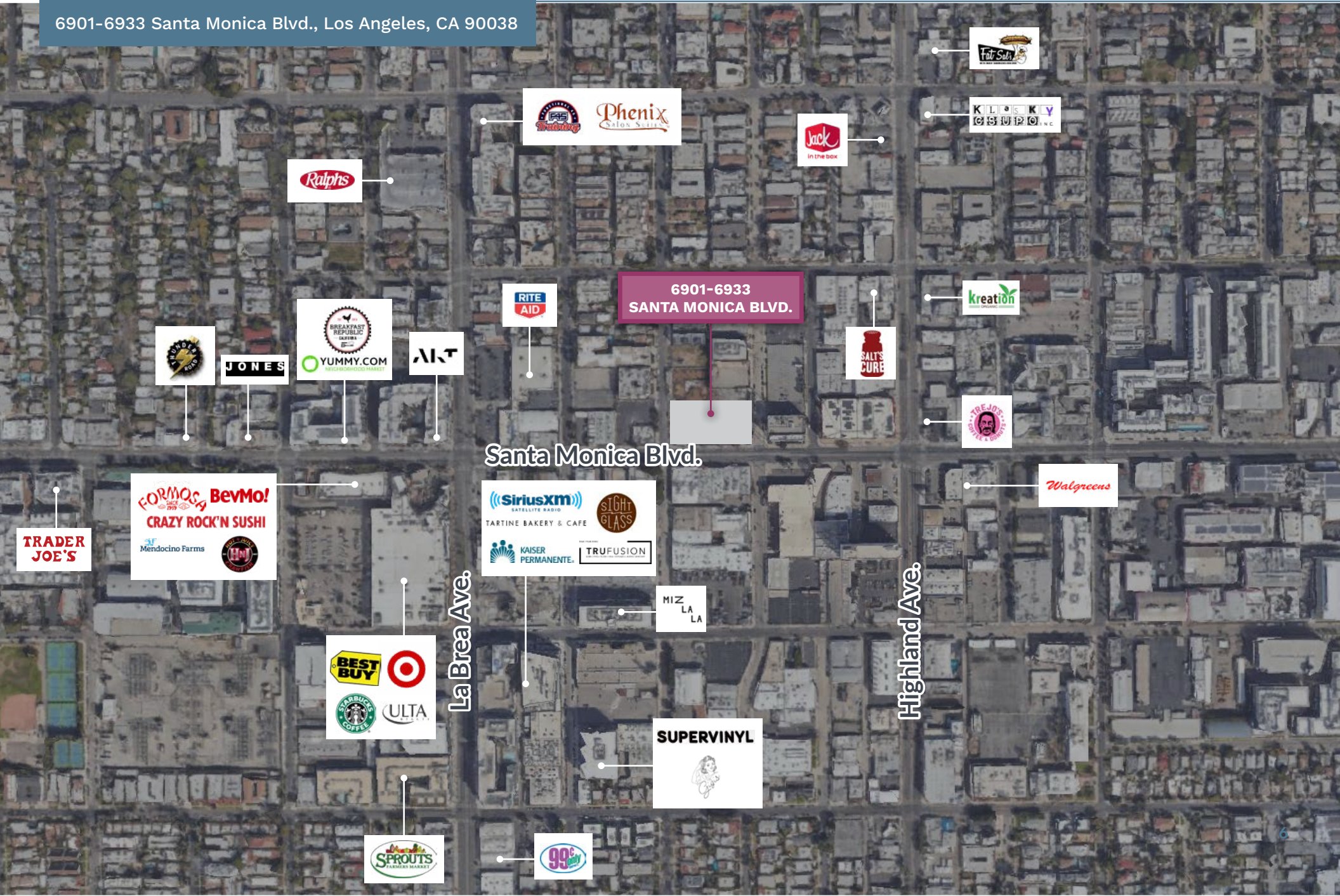
Restaurant/Fitness/Retail Spaces for Lease



KENNEDY WILSON

BROKERAGE

6901-6933 Santa Monica Blvd., Los Angeles, CA 90038



6901-6933
SANTA MONICA BLVD.

Santa Monica Blvd.

La Brea Ave.

Highland Ave.

TRADER
JOE'S

FORMOS
BevMo!
CRAZY ROCK'N SUSHI
Mendocino Farms

BEST BUY
STARBUCKS COFFEE
TARGET
ULTA

SPROUTS
FARMERS MARKET

SiriusXM
SATellite RADIO
TARTINE BAKERY & CAFE
KAISER PERMANENTE
SIGHT GLASS
TRUFUSION

MIZ
LA
LA

SUPERVINYL

99c
only

Ralphs

RITE
AID

WOLFE
BROS

JONES

BREAKFAST
REPUBLIC
YUMMY.COM
NEIGHBORHOOD MARKET

AKT

Phenix
Salon Suites

Jack
in the box

Fat Sals

KLOSKEY
GOLDEN

kreation

SALT'S
CURE

JOE JOE'S

Walgreens

NEW HOLLYWOOD MIXED-USE DEVELOPMENT

Restaurant/Fitness/Retail Spaces for Lease

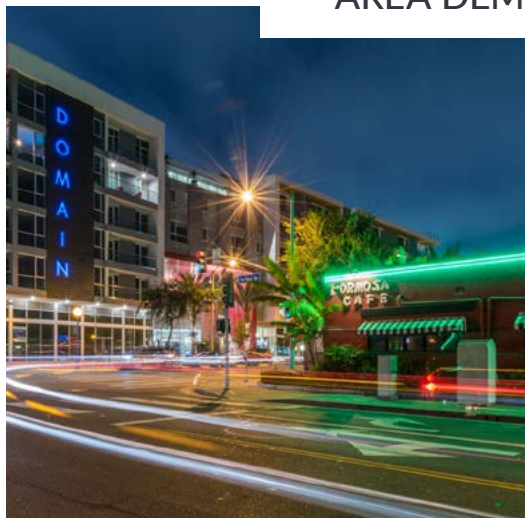


KENNEDY WILSON
BROKERAGE

6901-6933 Santa Monica Blvd., Los Angeles, CA 90038



AREA DEMOGRAPHICS



0.5 Mile 1 Mile 2 Miles

POPULATION

	0.5 Mile	1 Mile	2 Miles
2021 Estimated Population	12,426	58,049	181,586
2025 Projected Population	13,040	58,524	181,655
2010 Census Population	12,072	58,484	184,214
2000 Census Population	10,011	54,107	174,475
Projected Annual Growth 2021 to 2025	1.0%	0.2%	-
Historical Annual Growth 2000 to 2021	2.2%	0.7%	0.4%
2021 Median Age	35.8	36.0	36.4

HOUSEHOLDS

2021 Estimated Households	6,842	33,185	96,629
2025 Projected Households	7,522	34,903	100,575
2010 Census Households	6,608	33,360	97,777
2000 Census Households	5,364	29,969	90,044
Projected Annual Growth 2021 to 2025	2.0%	1.0%	0.8%
Historical Annual Growth 2000 to 2021	2.5%	1.0%	0.7%

RACE & ETHNICITY

2021 Estimated White	59.9%	61.1%	55.6%
2021 Estimated Black or African American	5.2%	4.9%	4.5%
2021 Estimated Asian or Pacific Islander	10.9%	9.4%	12.9%
2021 Estimated American Indian or Native Alaskan	0.7%	0.9%	0.9%
2021 Estimated Other Races	23.2%	23.8%	26.1%
2021 Estimated Hispanic	25.2%	25.8%	28.2%

INCOME

	0.5 Mile	1 Mile	2 Miles
2021 Estimated Average Household Income	\$88,563	\$89,803	\$107,227
2021 Estimated Median Household Income	\$69,173	\$68,007	\$76,733
2021 Estimated Per Capita Income	\$49,150	\$51,629	\$57,343

EDUCATION

2021 Estimated High School Graduate	11.1%	12.5%	13.3%
2021 Estimated Some College	16.9%	16.9%	15.9%
2021 Estimated Associates Degree Only	7.5%	6.7%	5.8%
2021 Estimated Bachelors Degree Only	42.1%	41.0%	39.3%
2021 Estimated Graduate Degree	16.1%	15.4%	16.8%

BUSINESS

2021 Estimated Total Businesses	1,063	4,652	12,581
2021 Estimated Total Employees	7,720	36,134	94,833
2021 Estimated Employee Population per Business	7.3	7.8	7.5
2021 Estimated Residential Population per Business	11.7	12.5	14.4

Lee Shapiro

EVP, Director of Retail
310-887-6226
LShapiro@kennedywilson.com
DRE #00961769

Jaysen Chiamonte

Associate
310-887-3492
JChiamonte@kennedywilson.com
DRE #02145586

Kennedy Wilson Brokerage | 151 S. El Camino Drive, Beverly Hills, CA 90212

Kennedy-Wilson Properties, Ltd. (Responsible Broker Identity, DRE #00659610) makes no warranty or representation as to the accuracy of the information contained herein. Terms of sale or lease and availability of the property are subject to change or withdrawal without notice.

KENNEDY WILSON

BROKERAGE

onni
group

LEE SHAPIRO

310-887-6226

LShapiro@kennedywilson.com

DRE #00961769

JAYSEN CHIARAMONTE

310-887-3492

JChiaramonte@kennedywilson.com

DRE #02145586

Kennedy Wilson Brokerage | 151 S. El Camino Drive, Beverly Hills, CA 90212 | 310-887-6400

Kennedy-Wilson Properties, Ltd. (Responsible Broker Identity; DRE #00659610) makes no warranty or representation as to the accuracy of the information contained herein. Terms of sale or lease and availability of the property are subject to change or withdrawal without notice.