



*Evelyn*  
by ONNI



# *The Townhomes at Evelyn Walk*

Situated upon a picturesque slope on Sentinel Hill, The Townhomes at Evelyn Walk offer an exclusive collection of four 3 and 4 bedroom residences. These elevated townhomes offer striking southern facing views of charming Evelyn Walk, the Pacific Ocean, and all that lies beyond.

Embodying West Coast modern architecture, Evelyn is a 22-acre masterplanned community showcasing move-in ready residences. Celebrating nature in a village locale - this distinguished address and elegant living environment is perfected by the quintessential West Vancouver lifestyle.





# *Evelyn* **LYN**

by **ONNI**



SINGLE FAMILY HOMES

SOLD OUT

SOLD OUT

SOLD OUT

SOLD OUT

TOWNHOMES AT EVELYN WALK

AT FOREST'S EDGE THREE & FOUR

SOLD OUT

SOLD OUT

SOLD OUT

EVELYN WALK





# EVELYN

by ONNI

## SITE PLAN | TOWNHOMES AT EVELYN WALK

**PLAN THA** | 3 Bedroom + Family Room

**PLAN THB** | 4 Bedroom + Family Room

**TOTAL AREA 2,340-2,380 SF**

**1,895-1935 SF**  
INDOOR AREA

**445 SF**  
OUTDOOR AREA

**TOTAL AREA 2,865 SF**

**2,410 SF**  
INDOOR AREA

**455 SF**  
OUTDOOR AREA



Rendering is an artist's interpretation only. Dimensions, square footage and floorplans are approximate only. Final dimensions, square footage and floorplans may vary and will be determined by final strata plan measurements. Final floorplans may be a mirror image of the floorplans shown above. The Developer reserves the right to make changes to the floorplans, project design, appliances, specifications, and features. E.&O.E.



# *Interiors*

The Townhomes at Evelyn Walk emulate West Coast Modernism, incorporating the use of natural materials native to their surroundings including stone, slate and wood. Floorplans are thoughtfully considered with contemporary design throughout, including 9 ft ceilings and seamlessly integrated indoor-outdoor living with southern-facing terraces.

Luxurious kitchens include integrated 36" Sub-Zero and Wolf appliances, natural stone countertops and European-inspired flat panel wood cabinetry with contrasting accent painted upper cabinets. Ensuites are spa-inspired with masters boasting a stand-alone, glass-encased shower with floor-to-ceiling tile, wall-mounted rain head and handheld shower set. Master ensuites also include a freestanding soaker tub for ultimate relaxation.



# Evelyn

by ONNI

## *The Townhomes at Evelyn Walk*

Situated at one with nature on West Vancouver's Sentinel Hill, The Townhomes at Evelyn Walk offer an exclusive collection of four 3 and 4 bedroom & family residences. These sophisticated townhomes embrace the architectural principles of West Coast modernism, incorporating the use of natural materials native to its surroundings, stone, slate and wood.

### **TIMELESS DESIGN**

- Premium wide-plank, engineered oak hardwood flooring
- Oversized solid core interior doors
- Automated lighting control in living areas
- Automated sound control with built-in speakers in kitchen
- Flat painted ceiling with recessed pot lighting throughout
- Sleek roller shades with remote control operation
- Full size high efficiency front loading washer and dryer
- Generous in-suite storage in all bedrooms with oversized walk-in closet in the master. All closets feature contemporary flat-panel doors, and modern brushed stainless steel door hardware
- Forced air heating and cooling with Smart Thermostat control
- Spacious one car garage with ample storage and EV charging
- Expansive outdoor living areas are equipped with water, gas and power connections

### **FUNCTIONAL KITCHENS**

- Designer appliance package
  - Sub-Zero 36" wood-paneled integrated fridge with dual freezer drawers at the bottom
  - Sub-Zero 24" integrated wine storage
  - Wolf 36" 5 burner gas cook top
  - Wolf 30" convection wall oven
  - Cove integrated dishwasher
  - Faber 36" low-profile slide out 3 speed hood fan
  - Panasonic stainless steel microwave with trim kit
- Natural stone quartzite with breakfast bar overhang and stone waterfall on oversized islands
- Full height stone backsplash to match countertops
- European-inspired flat panel wood cabinets with accent painted upper cabinets:
  - Cypress Scheme - Stained white mountain larch veneer and white satin painted cabinets
  - Hollyburn Scheme - Stained walnut veneer and soft grey satin painted cabinets
- Soft close mechanism on all kitchen doors and drawers
- Large single bowl stainless steel under mounted kitchen sink with polished chrome faucet with extractable spray and in-sink waste disposal
- Under cabinet recessed LED strip lighting to illuminate workspace
- Integrated LED drawer lighting for all cabinets

### **LUXURIOUS BATHROOMS**

- Master ensuite:
  - Opulent marble tile floor and walls, oversized dual vanity with waterfall edges and motion controlled under cabinet accent lighting
  - Back-lit medicine cabinet behind vanity mirror for convenient storage
  - Oversized walk-in shower encased in frameless glass features hidden tile drain, and rain shower head
  - Deep soaker tub with hand shower for ultimate relaxation
- Bathrooms:
  - Nuheat<sup>®</sup> electric floor heating system with signature touchscreen and wireless control
  - Generously sized floating vanity features polished natural stone countertops and under mount wash basin, satin painted cabinets, and soft close drawers
  - Oversized walk-in showers encased in frameless glass and floor-to-ceiling porcelain tile feature hidden tile drain, and rain shower head
  - Water-conserving elongated toilet
  - Polished chrome bathroom accessories

### **LANDSCAPING & AMENITIES**

- Landscaping includes heritage and additional trees, tranquil gardens, water features, inviting walkways, and interconnected pathways between buildings
- Two convenient footpaths run through Evelyn to Park Royal Shopping Centre which offers a selection of urban amenities, personal services and world class shopping.

### **SUSTAINABILITY**

Sustainable design principles have been developed to guide the design and construction of Evelyn with the use of energy efficient appliances, storm water management principles and the preservation of green spaces.

#### **Energy**

The buildings have been designed to reduce total energy and water consumption by selecting equipment and appliances that are the most energy efficient. Green external lighting systems have been selected for all public realms. Pedestrian walkways and proximity to transit will help reduce transportation energy usage.

#### **Materials**

Whenever possible, local, recycled and remanufactured materials have been selected and utilized, reducing the need for new products. Recycling systems are incorporated into the design of the community, reducing the amount of waste generated.



# *Everything at Your Fingertips*

Surrounded by sea, mountains and greenery, enjoy immediate access to the natural beauty of the North Shore. With Park Royal, Ambleside Beach, Cypress Mountain, and Downtown Vancouver all a stone's throw away, living at Evelyn means endless access to all of life's daily conveniences.

With no shortage of things to do, living at Evelyn offers seamless access to year-round activities from sailing, skiing, golfing, biking, and hiking. Only a short walk from Park Royal Shopping Centre, Vancouver's second largest shopping destination, the retail and dining options are unlimited with over 300 stores, services and restaurants to choose from.





## *Living at Evelyn*

Homes at Evelyn are accentuated by the natural surroundings with winding pathways, vibrant open public spaces, pedestrian walkways, and water features throughout. To add to the tranquil living environment, the wellness-focused amenities offer the perfect spaces to relax and soothe the day away with a steam room, sauna, fitness centre, yoga area, and lounge equipped with a full chef's kitchen.





# EVELYN

by ONNI

## TOWNHOMES AT EVELYN WALK

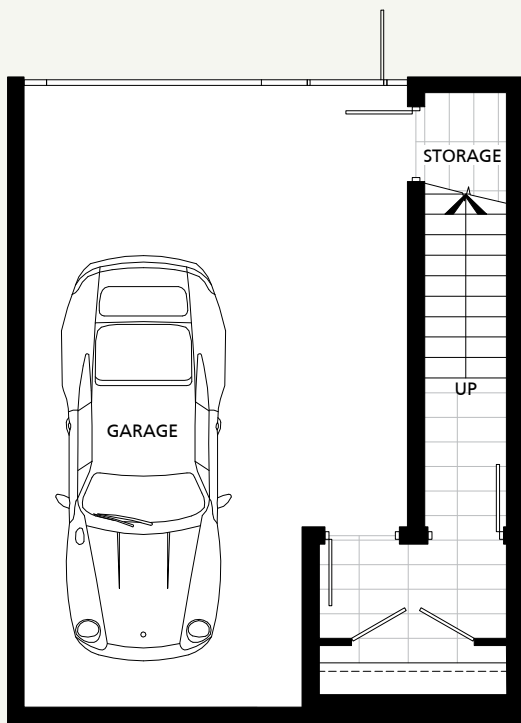
### PLAN THA | 3 Bedroom + Family Room

TOTAL AREA 2,340-2,380 SF

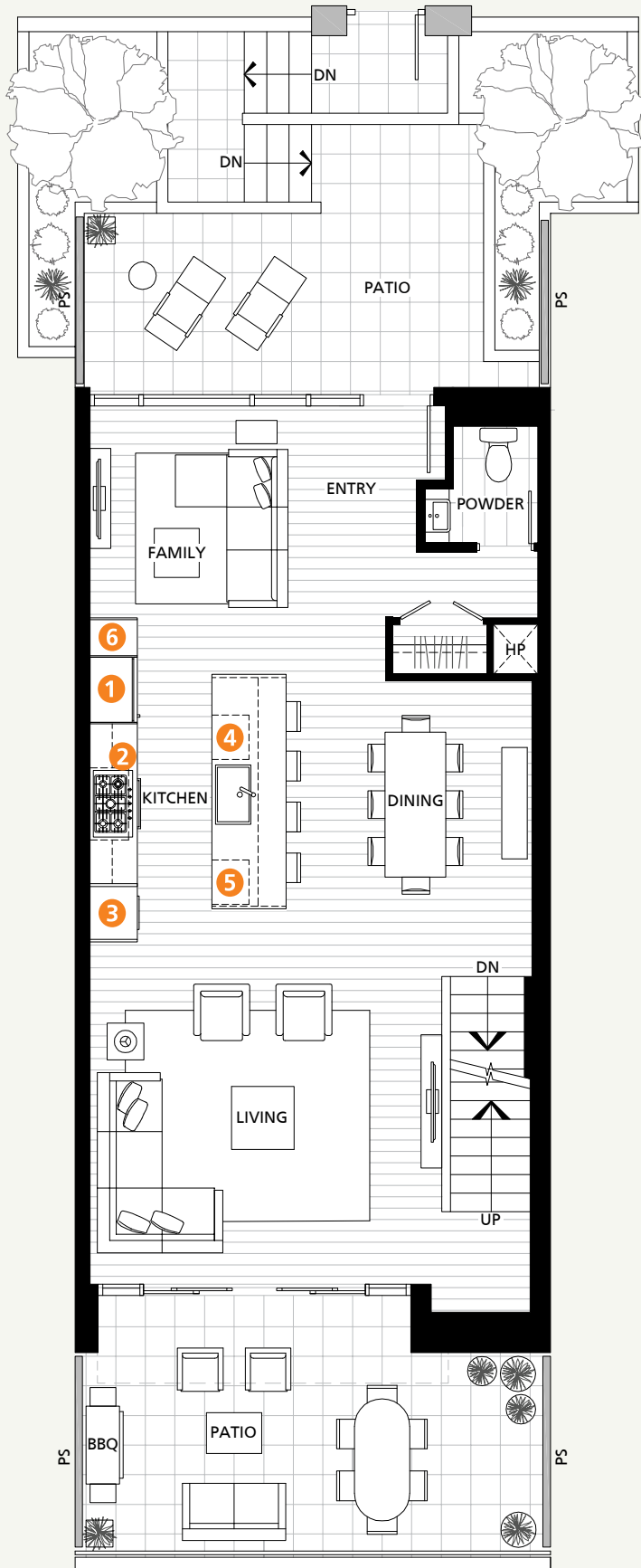
1,895-1935 SF  
INDOOR AREA

445 SF  
OUTDOOR AREA

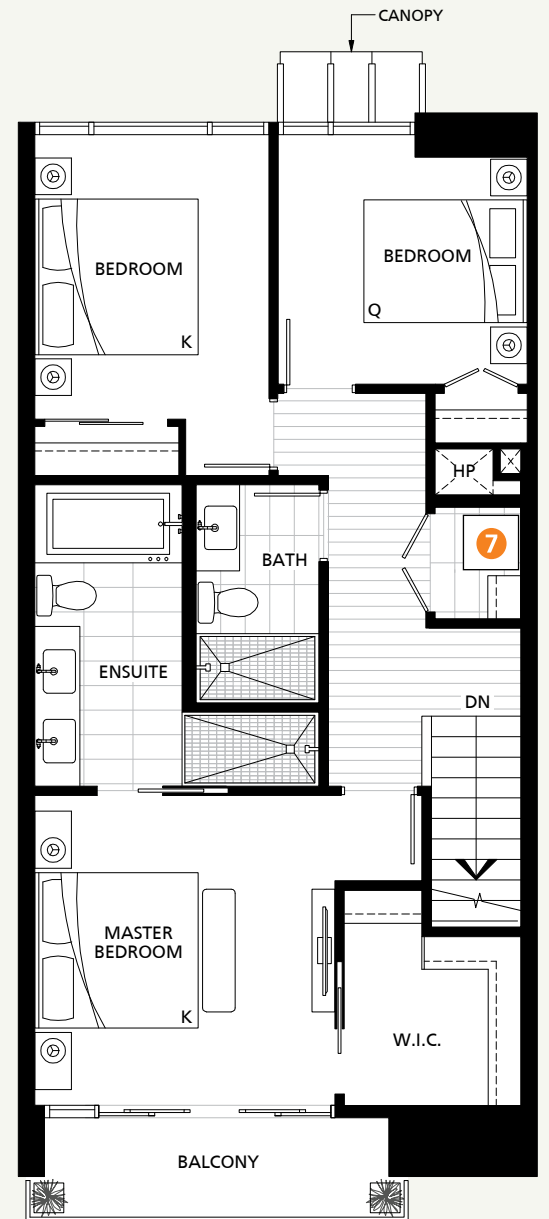
- 1 36" Sub Zero Integrated Refrigerator
- 2 36" Wolf Gas Cooktop + Faber Integrated Hood Fan
- 3 30" Wolf Convection Wall Oven + Panasonic Microwave
- 4 Cove Integrated Dishwasher
- 5 24" Sub Zero Integrated Under-Counter Wine Fridge
- 6 Pantry
- 7 High-Efficiency Full Size Washer and Dryer



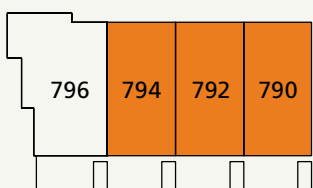
GARAGE



MAIN FLOOR



2<sup>ND</sup> FLOOR





# EVELYN

by ONNI

## TOWNHOMES AT EVELYN WALK

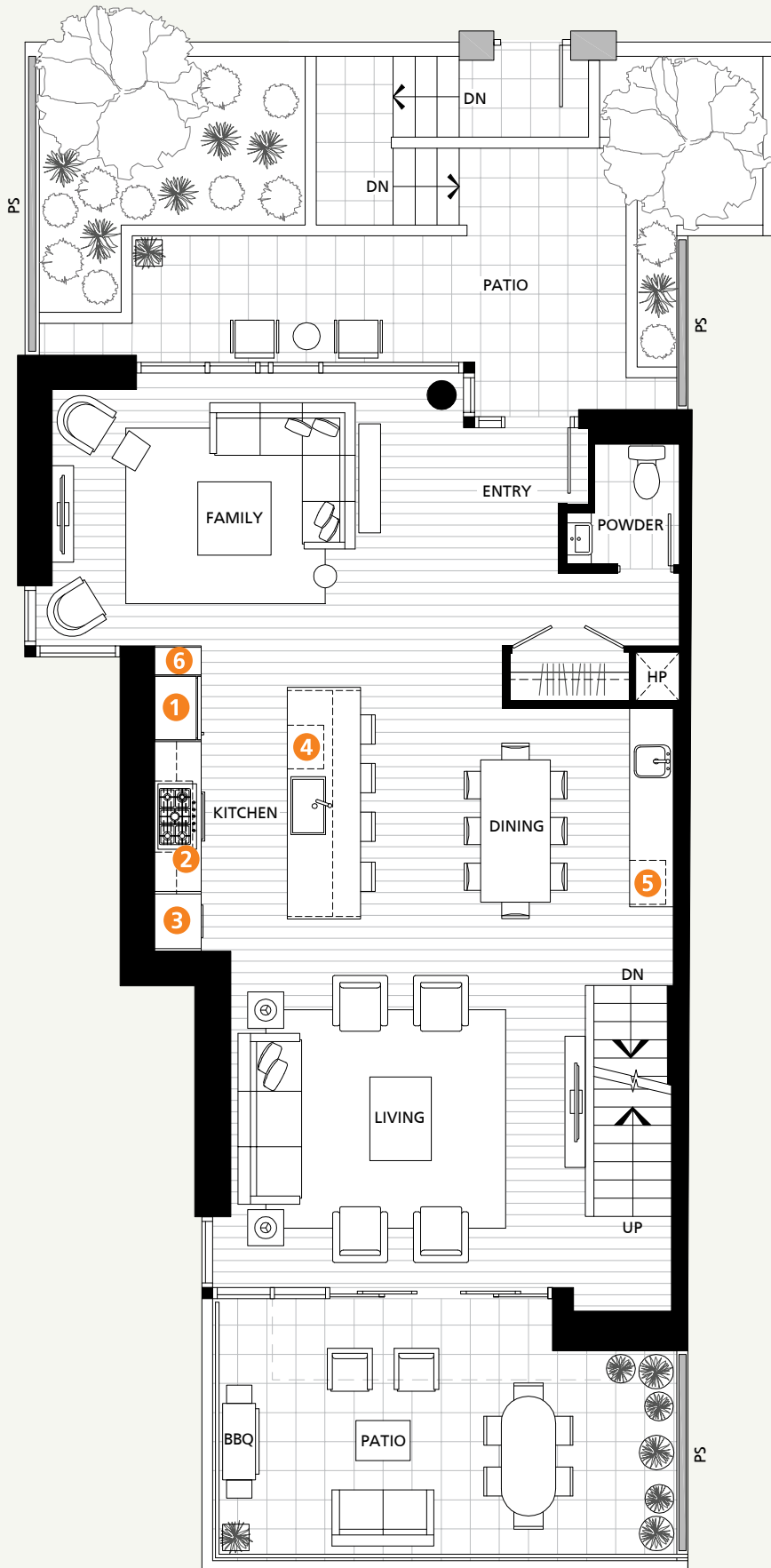
### PLAN THB | 4 Bedroom + Family Room

**TOTAL AREA 2,865 SF**

**2,410 SF**  
INDOOR AREA

**455 SF**  
OUTDOOR AREA

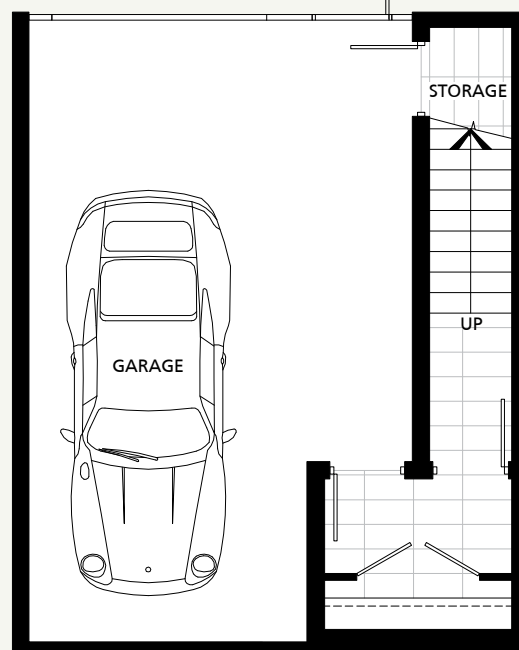
- 1 36" Sub Zero Integrated Refrigerator
- 2 36" Wolf Gas Cooktop + Faber Integrated Hood Fan
- 3 30" Wolf Convection Wall Oven + Panasonic Microwave
- 4 Cove Integrated Dishwasher
- 5 24" Sub Zero Integrated Under-Counter Wine Fridge
- 6 Pantry
- 7 High-Efficiency Full Size Washer and Dryer



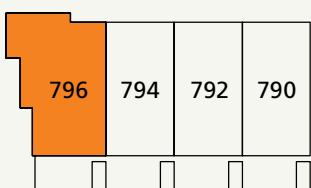
**MAIN FLOOR**



**2<sup>nd</sup> FLOOR**



**GARAGE**





# *Our Past. Your Future.*

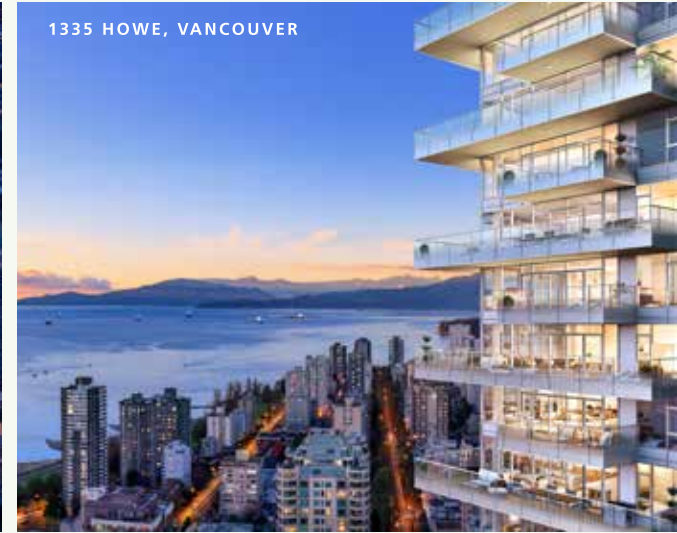
LEVEL FURNISHED LIVING,  
LOS ANGELES



GILMORE PLACE, VANCOUVER



1335 HOWE, VANCOUVER



CAMBIE GARDENS, VANCOUVER



THE HUDSON, CHICAGO



CENTREVIEW, NORTH VANCOUVER



The Onni Group is one of North America's leading private real estate developers, with extensive experience designing, developing, building and managing innovative projects. As a fully integrated company that directly oversees every step in the development process, Onni has built over 15,000 homes in the past decade.

In addition, the company owns and manages 18.4 million sq.ft. of commercial property, and over 11,200 rental apartment units and has an additional 28 million sq.ft. of space in different phases of development. With offices in Vancouver, Toronto, Chicago, Los Angeles, Seattle, Phoenix and Mexico, Onni continues to expand and diversify into new markets throughout North America.

Each home at Evelyn is backed by a comprehensive 2-5-10 year National Home Warranty that provides 2 full years in-home coverage for workmanship and materials, 5-year water penetration coverage and 10-year structural coverage for added peace of mind.



**ONNI.COM**

T: 604.922.0330

E: [evelyn@onni.com](mailto:evelyn@onni.com)

Dimensions, square footage and floorplans are approximate only and may vary. Final floorplans may be a mirror image of the floorplan shown above. All interior and exterior materials are subject to availability and may change without notice. The developer reserves the right to make changes to floorplans, project design, appliances, specifications and features. E.&O.E

