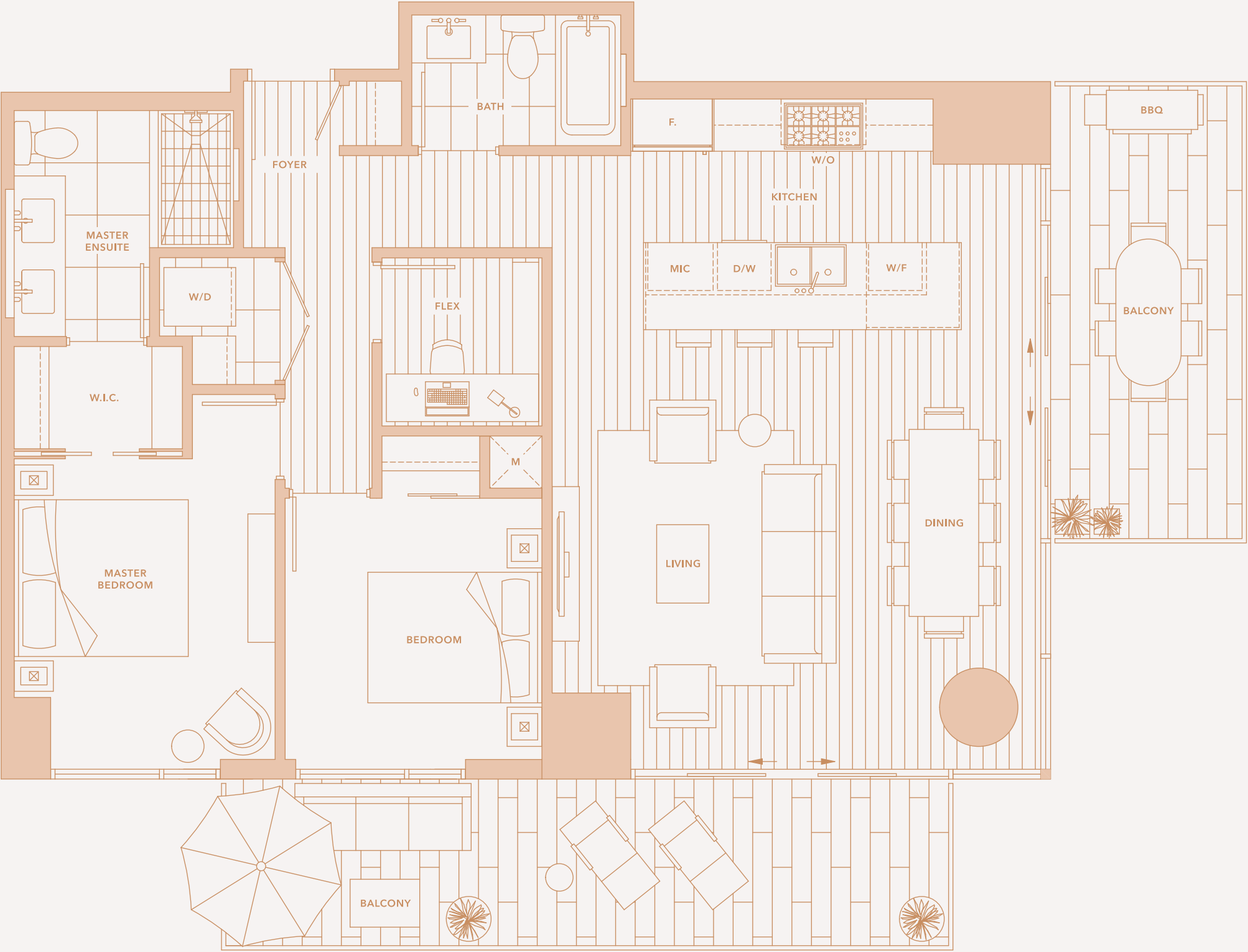
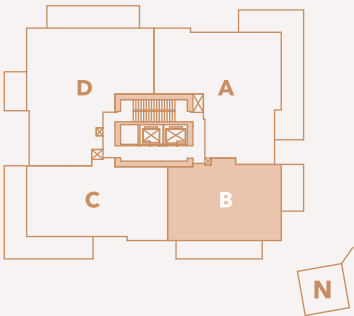


PLAN B

2 BEDROOM + FLEX

10TH – 36TH (EVEN FLOORS)
INDOOR 1,090 SQFT (APPROX)
OUTDOOR 285 SQFT (APPROX)

- APPLIANCES**
- 36" INTEGRATED SUB-ZERO REFRIGERATOR
 - 36" WOLF 5 BURNER GAS COOKTOP
 - 36" WOLF S.S. CHIMNEY HOODFAN
 - 30" WOLF DUAL CONVECTION OVEN
 - 30" WOLF MICROWAVE
 - INTEGRATED ASKO DISHWASHER
 - SINK DISPOSAL
 - 24" INTEGRATED SUB-ZERO WINE FRIDGE
 - HIGH-EFFICIENCY FULL SIZE MAYTAG WASHER AND DRYER

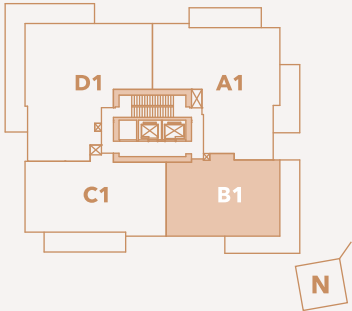


PLAN B1

2 BEDROOM +
FLEX

11TH – 37TH (ODD FLOORS)
INDOOR 1,090 SQFT (APPROX)
OUTDOOR 350 SQFT (APPROX)

- APPLIANCES
- 36" INTEGRATED SUB-ZERO REFRIGERATOR
 - 36" WOLF 5 BURNER GAS COOKTOP
 - 36" WOLF S.S. CHIMNEY HOODFAN
 - 30" WOLF DUAL CONVECTION OVEN
 - 30" WOLF MICROWAVE
 - INTEGRATED ASKO DISHWASHER
 - SINK DISPOSAL
 - 24" INTEGRATED SUB-ZERO WINE FRIDGE
 - HIGH-EFFICIENCY FULL SIZE MAYTAG WASHER AND DRYER

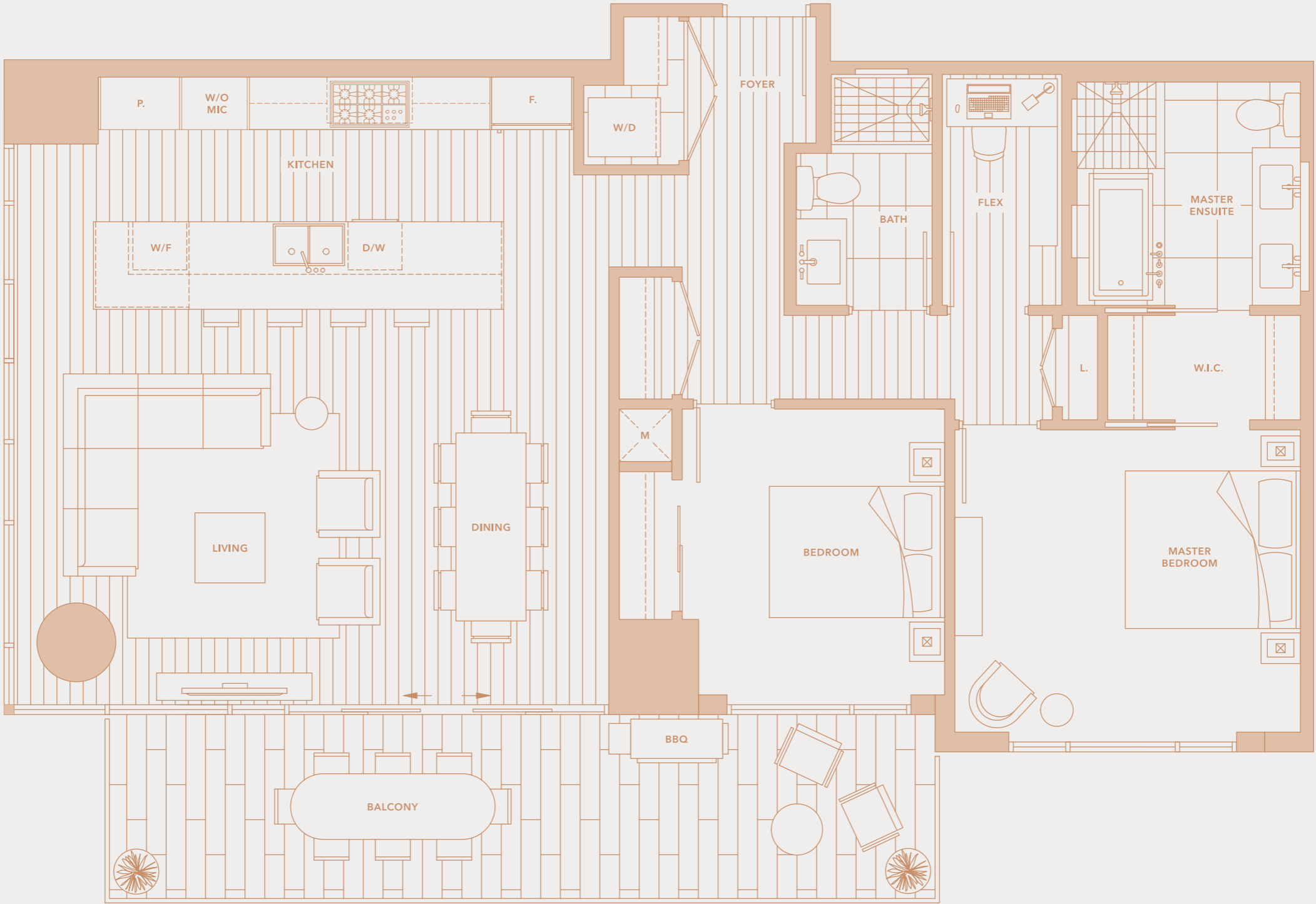
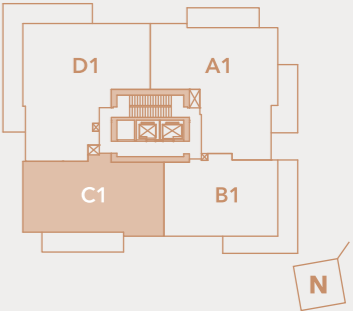


PLAN C1

2 BEDROOM +
FLEX

11TH – 37TH (ODD FLOORS)
INDOOR 1,265 SQFT (APPROX)
OUTDOOR 220 SQFT (APPROX)

- APPLIANCES**
- 36" INTEGRATED SUB-ZERO REFRIGERATOR
 - 36" WOLF 5 BURNER GAS COOKTOP
 - 36" WOLF S.S. CHIMNEY HOOD/FAN
 - 30" WOLF DUAL CONVECTION OVEN
 - 30" WOLF MICROWAVE
 - INTEGRATED ASKO DISHWASHER
 - SINK DISPOSAL
 - 24" INTEGRATED SUB-ZERO WINE FRIDGE
 - HIGH-EFFICIENCY FULL SIZE MAYTAG WASHER AND DRYER

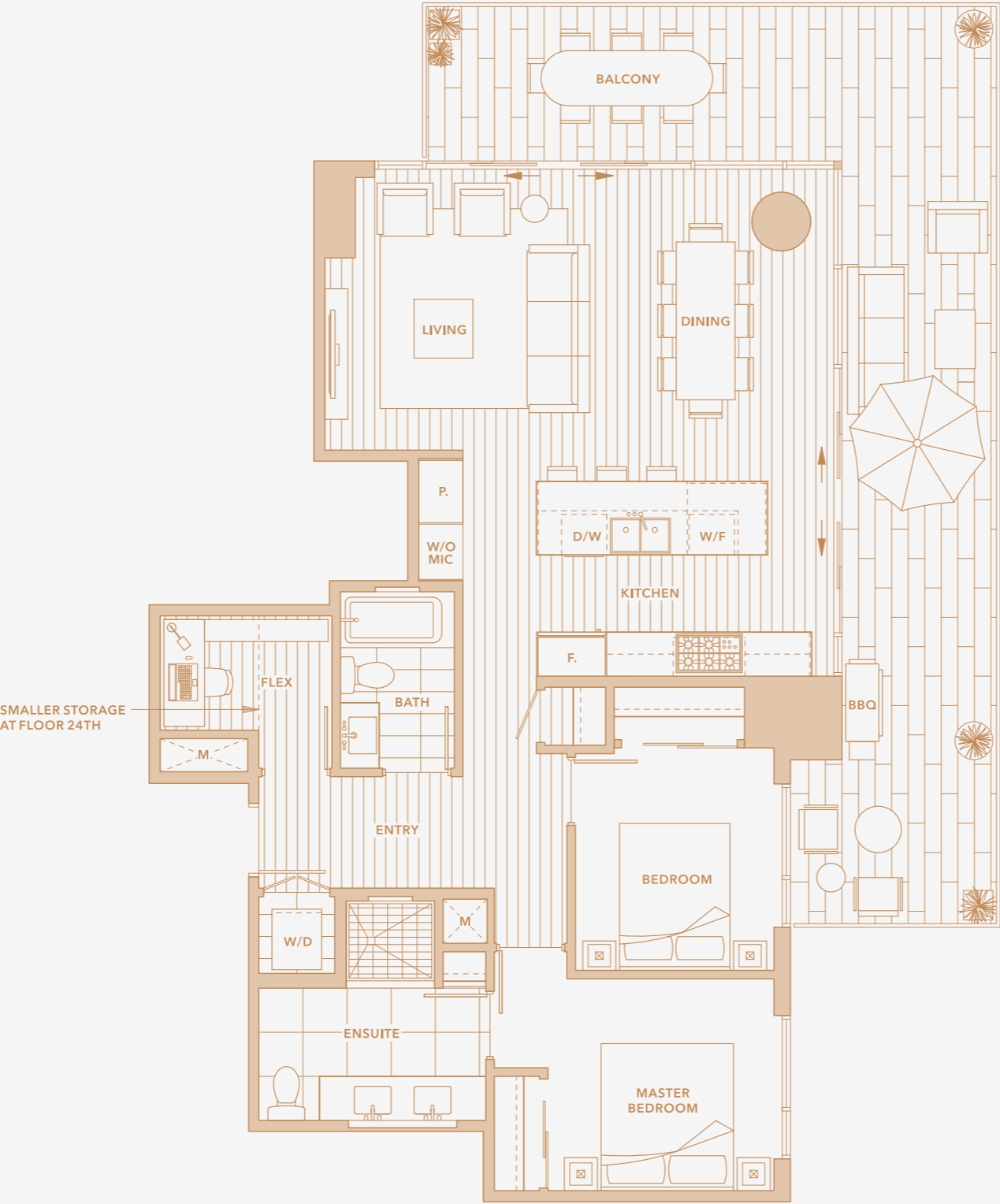
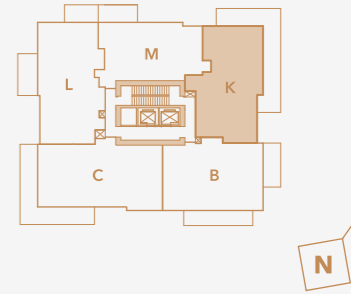


Dimensions, square footage and floorplans are approximate only. Final dimensions, square footage and floorplans may vary and will be determined by final strata plan measurements. Final floorplans may be a mirror image of the floorplans shown above. The Developer reserves the right to make changes to the floorplans, project design, appliance, specifications, and features. E.&O.E.

2 BEDROOM +
FLEX

14TH - 34TH (SELECT EVEN FLOORS)
INDOOR 1,095-1,120 SQFT (APPROX)
OUTDOOR 435 SQFT (APPROX)

- APPLIANCES**
- 36" INTEGRATED SUB-ZERO REFRIGERATOR
 - 36" WOLF 5 BURNER GAS COOKTOP
 - 36" WOLF S.S. CHIMNEY HOODFAN
 - 30" WOLF DUAL CONVECTION OVEN
 - 30" WOLF MICROWAVE
 - INTEGRATED ASKO DISHWASHER
 - SINK DISPOSAL
 - 24" INTEGRATED SUB-ZERO WINE FRIDGE
 - HIGH-EFFICIENCY FULL SIZE MAYTAG WASHER AND DRYER

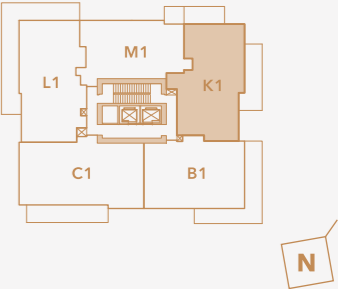


PLAN K1

2 BEDROOM +
FLEX

13TH - 33RD (SELECT ODD FLOORS)
INDOOR 1,120 SQFT (APPROX)
OUTDOOR 310 SQFT (APPROX)

- APPLIANCES**
- 36" INTEGRATED SUB-ZERO REFRIGERATOR
 - 36" WOLF 5 BURNER GAS COOKTOP
 - 36" WOLF S.S. CHIMNEY HOODFAN
 - 30" WOLF DUAL CONVECTION OVEN
 - 30" WOLF MICROWAVE
 - INTEGRATED ASKO DISHWASHER
 - SINK DISPOSAL
 - 24" INTEGRATED SUB-ZERO WINE FRIDGE
 - HIGH-EFFICIENCY FULL SIZE MAYTAG WASHER AND DRYER



Dimensions, square footage and floorplans are approximate only. Final dimensions, square footage and floorplans may vary and will be determined by final strata plan measurements. Final floorplans may be a mirror image of the floorplans shown above. The Developer reserves the right to make changes to the floorplans, project design, appliance, specifications, and features. E.&O.E.

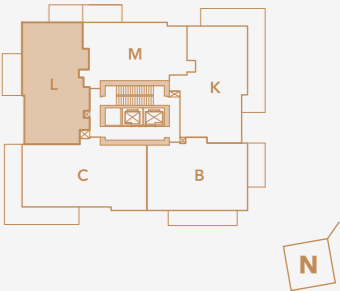


PLAN L

2 BEDROOM +
FLEX

14TH - 34TH (SELECT EVEN FLOORS)
INDOOR 1,205 SQFT (APPROX)
OUTDOOR 230 SQFT (APPROX)

- APPLIANCES**
- 36" INTEGRATED SUB-ZERO REFRIGERATOR
 - 36" WOLF 5 BURNER GAS COOKTOP
 - 36" WOLF S.S. CHIMNEY HOODFAN
 - 30" WOLF DUAL CONVECTION OVEN
 - 30" WOLF MICROWAVE
 - INTEGRATED ASKO DISHWASHER
 - SINK DISPOSAL
 - 24" INTEGRATED SUB-ZERO WINE FRIDGE
 - HIGH-EFFICIENCY FULL SIZE MAYTAG WASHER AND DRYER



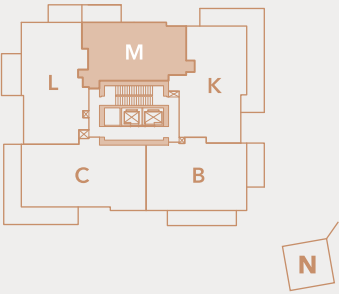
Dimensions, square footage and floorplans are approximate only. Final dimensions, square footage and floorplans may vary and will be determined by final strata plan measurements. Final floorplans may be a mirror image of the floorplans shown above. The Developer reserves the right to make changes to the floorplans, project design, appliance, specifications, and features. E.&O.E.

PLAN M

2 BEDROOM +
FLEX

LEVEL: 14, 18, 20, 24, 26, 28, 30, 34 ONLY
INDOOR 985 SQFT (APPROX)
OUTDOOR 110 SQFT (APPROX)

- APPLIANCES**
- 36" INTEGRATED SUB-ZERO REFRIGERATOR
 - 36" WOLF 5 BURNER GAS COOKTOP
 - 36" WOLF S.S. CHIMNEY HOODFAN
 - 30" WOLF DUAL CONVECTION OVEN
 - 24" WOLF MICROWAVE
 - INTEGRATED ASKO DISHWASHER
 - SINK DISPOSAL
 - 24" INTEGRATED SUB-ZERO WINE FRIDGE
 - HIGH-EFFICIENCY FULL SIZE MAYTAG WASHER AND DRYER



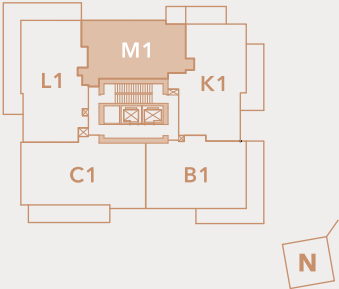
Dimensions, square footage and floorplans are approximate only. Final dimensions, square footage and floorplans may vary and will be determined by final strata plan measurements. Final floorplans may be a mirror image of the floorplans shown above. The Developer reserves the right to make changes to the floorplans, project design, appliance, specifications, and features. E.&O.E.

PLAN M1

2 BEDROOM +
FLEX

LEVEL: 13, 21, 27, 29, 33 ONLY
INDOOR 985 SQFT (APPROX)
OUTDOOR 55 SQFT (APPROX)

- APPLIANCES
- 36" INTEGRATED SUB-ZERO REFRIGERATOR
 - 36" WOLF 5 BURNER GAS COOKTOP
 - 36" WOLF S.S. CHIMNEY HOODFAN
 - 30" WOLF DUAL CONVECTION OVEN
 - 24" WOLF MICROWAVE
 - INTEGRATED ASKO DISHWASHER
 - SINK DISPOSAL
 - 24" INTEGRATED SUB-ZERO WINE FRIDGE
 - HIGH-EFFICIENCY FULL SIZE MAYTAG WASHER AND DRYER



Dimensions, square footage and floorplans are approximate only. Final dimensions, square footage and floorplans may vary and will be determined by final strata plan measurements. Final floorplans may be a mirror image of the floorplans shown above. The Developer reserves the right to make changes to the floorplans, project design, appliance, specifications, and features. E.&O.E.